



# NEWSLETTER

## City of Oberlin Spring 2011 Newsletter

### 2011 Pride Day

Pride Day is an annual opportunity for Oberlin residents to volunteer to help clean up and beautify public spaces. This year, Oberlin Pride Day will be Saturday, May 21, 2011. Once again this year, Pride Day projects will begin with a continental breakfast at Oberlin Inn beginning at 8:30 a.m. Oberlin Pride Day volunteers that sign up at the breakfast will be eligible to win one of two \$25 Oberlin Main Street Chamber gift certificates.

Volunteers or groups planning a special project for Pride Day, are encouraged to contact Sharon Pearson at 775-7217 or by e-mail at [spearson@cityofoberlin.com](mailto:spearson@cityofoberlin.com). This will enable us to publicize all of the many projects happening that day and to match volunteers with projects needing more help.

Spring is a great time to begin residential yard improvement projects. The City of Oberlin is here to help: Spring Brush Collection starts Monday, April 18 and will end following Pride Day weekend (May 21 – 22, 2011.) Also, free leaf compost and wood chips for your garden will be available at the City's compost site behind the Water Environment Protection Facility on SR511 east of town from 9:00 a.m. - 1 p.m. on Pride Day -

Saturday, May 21. The City's front-end loader will be available to load into open trailers and pickup trucks. Residents may also bring a shovel and suitable containers to load smaller quantities. This event will be postponed if wet conditions make the compost site too muddy for safe access. Questions regarding brush collection or free compost should be directed to Sheri Runals in the Public Works Department at 775-7218 during normal business hours.

Pride Day is a special annual event that helps make our community an attractive destination for many spring and summer visitors. The City of Oberlin appreciates the support of Oberlin Main Street Chamber and Green Circle Growers for sponsoring the 2011 Oberlin Pride Day and the dozens of volunteers who have provided tremendous support for Oberlin Pride Day projects every year. Let's prove, once again, that Oberlin residents are "blooming with pride" by volunteering for projects again this year. Thank you!

Sharon Pearson, CAP  
2011 Oberlin Pride Day Coordinator

### TABLE OF CONTENTS

Oberlin Pride Day .....	1
Mosquito Control Program .....	2
Fire Department News .....	2
Juneteenth .....	2
Income Tax Department .....	3
Rules for Trash Removal .....	4
Finance/Utilities Office .....	6
Efficiency Smart Program .....	7
Saving the Oberlin Gasholder .....	13
Calendar of Events .....	15





### Mosquito Control Program

With the return of warmer weather and our typical spring rains, residents can also expect the return of mosquitoes, including those which may transmit the LaCrosse Encephalitis virus and West Nile virus. The City of Oberlin has educational pamphlets and mosquito control briquettes available for distribution to residents.

The brochure explains the life cycle of the mosquito and suggests ways in which residents can reduce mosquito breeding habitat on their property. Mosquitoes breed in standing water so it is important to check gutters, planters, bird baths and any other place on your property where water can pool. The briquettes are used in standing water to prevent mosquito larvae from maturing to adulthood. Briquettes are available free and come with instructions for use. Please estimate the area of standing water to be treated.

Briquettes and educational pamphlets are available at City Hall, 85 South Main St., during normal business hours. The educational pamphlet can also be viewed at [www.cityofoberlin.com](http://www.cityofoberlin.com) under Public Works/Buildings and Grounds. Please call 775-7218 if you need additional information.



### Oberlin Fire Receives Vehicle and Equipment

The Oberlin Fire Department has accepted delivery of a 2011 Pierce Velocity Rescue Pumper manufactured by Pierce Manufacturing of Appleton, WI. The new fire apparatus replaces a 1990 Sutphen fire engine and will become the primary response vehicle for the department. The apparatus is fully equipped for response to fire suppression, rescue, and emergency medical incidents. It contains an advanced technology 1500 gallon/minute fire pump, 750 gallon water tank, state-of-the-art foam suppression systems, and a 10kw generator system. Total cost of the unit was \$549,339.

In addition, the Department of Homeland Security has announced an Assistance to Firefighters Grant (AFG) award to the department for \$54,117 for the purchase of cardiac monitor units for emergency medical care. This grant will be used to add two LIFEPAK 15 monitor/defibrillators - the new standard in emergency care for advanced life support teams. Each unit can monitor blood oxygen and gas content, blood pressure, and support CPR (cardiac resuscitation) by administering defibrillation shocks (both automated and manual). The unit is also capable of sending current patient data directly to the emergency physician.

### Embrace Oberlin's History Celebrate Juneteenth



Debra Rose

Celebrate Juneteenth in Oberlin beginning Sunday, June 12 at 3:30 p.m. by enjoying An Afternoon With Edmonia. Come and meet Edmonia Lewis, the first recognized African-American female sculptor, as portrayed by Debra Rose, on the new East College Street Plaza.



Daniel J. Sharfstein

The celebration will continue on Thursday, June 16, 6:30 p.m. at the Oberlin Public Library when author Daniel J. Sharfstein, discusses his book, *The Invisible Line: Three American Families and the Secret Journey from Black to White*, Cosponsored by the Oberlin Public Library. The families Mr. Sharfstein features in his book are The Gibsons, The Spencers, and the family of O.S.B. Wall.



Bob O'Connor

Friday, June 17, will start with a Luncheon at 12:00 noon at the Oberlin Public Library, featuring a talk by Bob O'Connor, author of six historical novels including *The U.S. Colored Troops at Andersonville Prison* and *The Perfect Steel Trap Harpers Ferry 1859*. The afternoon will continue with a History Teach-In leading up to the 3:00 Tour of Westwood Cemetery with Margaret Christian that will pay tribute to all the Civil War Soldiers buried in Westwood.

At 6:00 p.m. the community is invited back to Westwood Cemetery for the Maafa Memorial Service. Following the Service everyone is invited to join the Oberlin African-American Genealogy and History Group and the Oberlin Public for a Juneteenth Genealogy Lock-In (pre-registration required) at the Library or you may choose to attend the Juneteenth Concert in the Park sponsored by Oberlin Main Street-Chamber on Tappan Square.

Saturday morning, June 18, at 10:00 a.m. will kick-off the Annual Juneteenth festival on Tappan Square. There will be something for everyone. You don't want to miss it.

Juneteenth or June 19, 1865, is considered the date when the last slaves in America were freed. Oberlin's history of commitment to abolition and the cause of freedom make this community uniquely qualified to celebrate Juneteenth.

All programs and activities are free and the public is invited to attend. For a schedule of events and vendor information, visit [www.juneteenthoberlin.com](http://www.juneteenthoberlin.com) or Contact:

**Juneteenth Oberlin, Inc.**  
**M.P.O. Box 0374**  
**Oberlin, Ohio 44074-0374**  
**Phone: 440.935.0201 [message only]**



## Income Tax Department

The City of Oberlin is a member of the Regional Income Tax Agency (RITA).



### Mandatory Filing:

All Oberlin residents are required to file annual city income tax returns, even if no tax is due. This includes anyone temporarily living away from home, such as college students, teachers, etc.

Non-resident taxpayers who have income derived within the City of Oberlin and for whom the tax is not withheld by their employer must file an Oberlin City income tax return.

### Partial Year Residents:

If you lived in the City of Oberlin for any part of the year, you are required to file a tax return. Income, deductions and credits may be allocated on a pro-rata basis or by employer verification (i.e. payroll check stubs or letter detailing income earned during Oberlin residency).



### Free E-File & E-Payment of Municipal Taxes

Residents and employers can file and pay Municipal Income Taxes on-line through **The Regional Income Tax Agency (R.I.T.A.)** at [www.ritaohio.com](http://www.ritaohio.com).

### INDIVIDUAL TAXPAYERS ARE PROVIDED THE FOLLOWING FEATURES:

- Paperless filing with immediate confirmation.
- An automatic calculation of taxes or refunds based on W2 wages and other income.
- Ability to file even if you moved in 2009.
- Electronic transfer of funds into checking or savings accounts.
- Pay by ACH (electronic debit or checking/savings accounts), credit card or debit card.
- Schedule payment of taxes - file as early as you like and set up an ACH payment anytime before April 15th.

### HERE'S WHAT YOU NEED TO E-FILE:

- Social Security numbers for you and your spouse.
- W-2 forms from all employers.
- 1099 forms and Federal Schedules C, E and F.
- Date of move for residents that moved in 2009.
- Bank routing and account numbers - for a fast refund or to pay electronically.

### EMPLOYERS HAVE THE FOLLOWING CHOICES:

- Monthly or Quarterly Withholding returns*
  - Fill in simple form online, or
  - Attached a payroll file
- Annual Withholding Reconciliation returns*
  - Upload W-2 data with online filing, or
  - Save W-2 data to CD and mail to R.I.T.A.

## FAST - SIMPLE - SECURE - FREE!

For more information, log on to [www.ritaohio.com](http://www.ritaohio.com) or call the R.I.T.A. office at 440 526-0900 or 800-860-7482

### Mailing Address:

Regional Income Tax Agency, P.O. Box 477900  
Broadview Hts, OH 44147

Phone: 440 526-0900 or 1-800-860-7482

Fax: 440 526-8813

Web: [www.ritaohio.com](http://www.ritaohio.com)

## INCOME TAX FAQs

### (FREQUENTLY ASKED QUESTIONS)

**Q: What is the City of Oberlin Income Tax rate and what type of income is taxable?**

**A:** The income tax rate is 1.9%. Generally, gross income (including income which is deferred) and business net profits are taxable. A list of taxable and nontaxable income is available from the Regional Income Tax Agency at [www.RitaOhio.com](http://www.RitaOhio.com) or by phone at 1-800-860-7482.

**Q: Do I need to file a Declaration of Estimated Tax?**

**A:** Every person who anticipates receiving taxable income or who engages in any business, profession, or activity subject to Oberlin income tax, after excluding Oberlin withholding and/or other credits, must file a Declaration of Estimated Tax.

**Q: I am not a resident of the city but I work there. If my employer withholds my tax, do I need to file a return?**

**A:** No, filing is only mandatory for Oberlin City residents and nonresidents whose income is not withheld correctly.

**Q: What is the due date of the City return?**

**A:** For individuals, the City of Oberlin tax return is due on April 15 of each year. Business (fiscal year) returns are due on the 15th day of the fourth month following the end of the fiscal year.

**Q: Can I deduct my business losses from my W-2 wages on my tax return?**

**A:** No, losses from self-employment, partnership interests, rental property and other like businesses may not be used to offset W-2 income.





# Oberlin Residential Rules for Trash Removal

### RESIDENTIAL REFUSE COLLECTION

**RULES:** Refuse is collected Tuesday through Friday, 52 weeks a year, including all holidays. The weekly limit for residential collection is not more than three (3) 32 gallon bags or cans per household. When a household is over this limit, the City will collect three (3) and leave the others (unless tagged – see below). If there are cans and bags, the cans will be picked up first. Refuse must be placed at the curb by 6:00 a.m. the day of collection but no sooner than noon on the day before. Containers must be removed from the curb by midnight on the day of collection.



**EXTRA GARBAGE BAG COLLECTION:** Extra bag tags are available for \$1.00 each from the Finance/Utility Department at 69 S. Main St.

**Acceptable Cans** – Plastic or galvanized metal trash cans not exceeding 32 gallon capacity, with handles, in good condition and not exceeding 50 pounds when filled. Garbage should be wrapped or placed in bags before depositing in containers. Lids should fit on full cans.

**Acceptable Bags** – Plastic or plastic lined bags, 32 gallon capacity or less, not exceeding 30 pounds. Bags must be tied and not torn due to over-stuffing or animals.

**Cardboard Boxes** – Unacceptable as refuse containers. Cardboard boxes can be recycled.

**Place all refuse for collection on opposite side of the drive from recycling containers by 6:00 a.m. the day of collection. Refuse will not be removed when left in boxes, paper bags or loose piles.**

Rear yard collection is available for elderly or infirm residents. Persons needing rear yard collection must contact the Public Works Department at 775-7218.

Where there are chronic problems with over-the-limit refuse, the City may notify the owner of the problem and begin collecting the extra containers at the owner's expense. Please refer to Chapter 925 of the City of Oberlin Codified Ordinances for more information. Problems regarding trash containers being left at the curb will be referred to the Community Services Officer for action.

**RESIDENTIAL RECYCLING RULES:** The City of Oberlin is an environmentally conscious community and encourages curbside recycling. The amount of properly sorted recyclables a resident may place out is unlimited. Weekly recycling must be placed at the curb by 6:00 a.m. the day of collection but no sooner than noon on the day before. Containers must be removed from the curb by midnight on the day of collection.

Glass, plastic and can recyclables must be placed in the city's 5 gallon recycling buckets or your own durable containers, clearly identified with the city's recycling logo. Buckets are available at 69 S. Main St. Recycling stickers are available at City Hall.

Please separate into the following categories:

**Glass** – Rinsed clear, green or brown bottles and jars. Remove caps and rings.

**Plastic Bottles** – Rinsed plastic #1 and #2 only. Look for the number inside the triangular recycling arrows.

**Cans** – Rinsed aluminum and steel (tin) cans and metal lids. No aerosol containers or paint cans.

**Mixed Paper** – Items accepted: catalogs, newspaper, magazines, paper board, junk mail, office-computer-school paper and phone books. Must be bundled or placed in brown paper bags or plastic bags. **Do not put paper in recycling buckets.** Wet paper will not be picked up.

**Cardboard** – Corrugated cardboard must be flattened. Wet cardboard will not be picked up. Please call to schedule a pick up for large amounts of cardboard. Boxes must be flattened and tied securely into manageable bundles.

**Place all recycling on the opposite side of the driveway from refuse containers/bags by 6:00 a.m. the day of collection.**

**ITEMS PROHIBITED FROM ALL CITY REFUSE SERVICE COLLECTIONS:** Hazardous or infectious wastes, wet paint, tires, castings, large car parts, storage batteries, brush, grass clippings or other yard waste (other than a nominal amount incidental to other refuse), motor oil, waste oil, bricks, rocks or concrete, dirt or any material prohibited by State or Federal law from being landfilled. Items containing refrigerants (refrigerators, freezers, air conditioners, dehumidifiers) cannot be accepted unless the refrigerant has been removed from the appliance by a certified technician. The technician will place a removal certification on the appliance. The City will not collect these appliances unless the required certification is in place.



**SCHEDULED LARGE TRASH COLLECTIONS IN EXCESS OF GENERAL RESIDENTIAL REFUSE COLLECTION:** Trash which exceeds the allowable volumes set forth in Section 925.03 of the Codified Ordinances shall be collected according to a schedule published by the City. Residents desiring large trash collection services shall make an appointment for a pickup. Appointments must be scheduled by 5:00 p.m. on the Thursday prior to the week of the pickup. Trash to be picked up shall be less than 2 cubic yards and shall be placed in such a way as to be readily loaded by the refuse collectors. Refuse greater than 2 cubic yards or where the nature of the refuse is such that loading by hand is impractical, may, at the option of the City, require the homeowner to pay for the use of a temporary dumpster.

The City provides for one special refuse collection per year on an appointment basis. Residents must call a week in advance. The City will collect up to 2 cubic yards (6' long x 3' wide x 3' high) at no charge; each additional yard will be \$12.00. The number of large pickups is limited and appointments are made on a "first come – first served" basis. Refuse must be placed in a way that is readily loaded by the refuse collectors. This means that small items or loose refuse needs to be bagged, bundled or otherwise put in containers. Materials prohibited from regular collection are also prohibited in special collections.

When the resident schedules a special collection, they are informed verbally and in a letter that the special pickup is limited to 2 cubic yards. To the practical extent, the City will collect all refuse put out. If the amount of refuse placed is substantially more than 2 cubic yards, a picture will be taken and submitted to the Public Works office for billing.

**UNSCHEDULED LARGE TRASH COLLECTIONS IN EXCESS OF GENERAL RESIDENTIAL REFUSE COLLECTION:** At the option of the City, unscheduled large trash collections will be charged \$50.00 or \$18.00 per cubic yard, whichever is greater.

**TEMPORARY DUMPSTER SERVICE:** Six yard temporary dumpsters are available to residents, subject to availability and access. The City must be able to deliver, service and remove the dumpster without damage to trees, buildings and overhead wires. Dumpsters must be placed on an improved, hard and level surface such as gravel, asphalt or concrete. Persons ordering a temporary dumpster are required to pay in advance for the dumpster at the Public Works office located at 85 S. Main St. Dumpsters are only delivered and picked up on Wednesday's.

Charges for temporary dumpsters are as follows: Delivery and collection of a dumpster for a one week period is \$75.00. Additional pickups are \$37.50 each. Use of dumpster for an additional week is \$30.00. Temporary dumpsters set at a customer's site are limited to a maximum of 3 weeks. The dumpster will be picked up by the City at the end of the prescribed time. The City will make a single attempt to deliver the dumpster. If the dumpster cannot be set due to actions of the customer (e.g. cars in the way), a \$20.00 fee will be charged with the balance of the pre-payment refunded to the customer. If the dumpster cannot be removed due to the actions of the customer, a \$50.00 fee will be charged and added to the resident's monthly utility bill.

**YARD WASTE:** Yard waste shall not be placed in containers with household refuse. The City collects bagged yard waste on Monday mornings by appointment only. Residents must place yard waste in biodegradable paper 'lawn and leaf' bags or biodegradable plastic yard waste bags. This requirement does not apply to brush or fall curbside leaf collection. At other times, leaves shall be treated as yard waste. Plastic yard waste bags must be clearly marked "biodegradable" by the manufacturer. Please do not use grocery store bags or other bags not designed for this purpose. Paper 'lawn and leaf' bags and biodegradable plastic bags can be incorporated directly into the compost. This will increase efficiency and also help the City to produce higher quality compost. Bagged yard waste should not exceed 30 pounds. Residents must purchase yard waste tags (\$1.00 each) from the Utility Office at 69 South Main St., attach those tags to the 'lawn and leaf' bags and schedule a pickup by calling the Public Works Department at 775-7218.

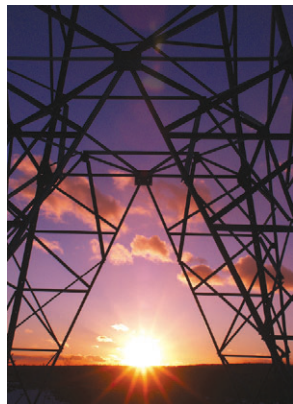
**BRUSH COLLECTION:** Brush is collected one month in the spring and one month in the fall. Dates will be announced. For Spring 2011, all brush must be out for collection by May 22.

**LEAVES:** Curbside leaf collection begins after the fall brush collection ends and continues until a majority of the leaves are picked up or until we get a substantial snowfall. Please rake leaves to the curb lawn only. Do not rake the leaves into the street.

If you do receive a complaint tag, please take the time to find out why. Your cooperation is very important in this effort and will be greatly appreciated. We are also interested in your comments or suggestions to improve services. For questions regarding this program or to schedule a pickup, please call the Public Works Department at 775-7218.



# Finance/Utility Office



The Finance Department is responsible for billing, collection, and customer service for approximately 3,000 accounts with the following services: Electric, Water, Sewer, and Refuse. The Customer Service office is located on the first floor of the Old City Hall Building, at 69 S. Main Street. Office hours are from 8:30 a.m. to 5:00 p.m., Monday - Friday. A finance

assistant can be reached at 775-7211 or 775-7214.

Meters are read and customers are billed monthly. Payments can be mailed to the above address or made at the cashier's window during business hours. There is a drive-up box in the rear parking lot of the building, near the mail boxes. PLEASE DO NOT PLACE CASH IN OUR DROP BOX.

### Utility Billing Schedule

- 1st of Month: Utility bills are sent out.
- 20th of Month: Bill is due.
- 1 day after due date: One-time late fee is applied.
- 7-10 days after due date: A 14-day delinquent notice is mailed, which states the delinquent balance and instructions on what you can do if you are unable to pay within the next 14 days; i.e. call the Utility Office to make payment arrangements at 775-7214 or contact an Agency for assistance, see list below.
- 1st of following Month: New bill is mailed out which indicates the past due balance, if any, along with the current charges which are due on the 20th of the new month.
- 7 days after delinquent notice (around 5th of month): A last notice tag is placed on the property for the amount that was due on the 20th of the prior month. This is 7 days before shut off.
- 7 days after last notice tag (around the 12th of the month): The utility is shut-off.

- The City wants to help all customers avoid utilities disconnection - please contact us at 775-7214 as soon as you know you will be unable to pay your bill or contact one of the several local Agencies for assistance.

**HEAP** **440-245-1870**  
Contact Lorain County Community Action Agency

**Salvation Army** **440-935-9967**  
Contact Mark Fahringer

**Oberlin Community Services** **440-774-6579**

**Lorain County Community Action**  
Lorain **440-245-1870**  
Wellington **440-647-6410**

**Lorain County Human Services** **440-323-5726**  
(Cash assistance only – if eligible)

## UTILITY BILLING FAQs (FREQUENTLY ASKED QUESTIONS)

### Q: How much does it cost to open a new account?

A: The City requires a \$187.00 security deposit at the time of sign up of services. Waiver of deposit may be made based upon prior billing history. (Ordinance 909.05)

### Q: What do I do to start service?

A: We ask that you come to our office at 69 South Main Street to sign up for services at least 3 business days prior to service date. If this is a new account, a deposit may be required.

### Q: How soon can I get my water turned on?

A: Once notification for service is filled out, we can turn the service on the next business day. If the water is turned off, we will need access to the meter to turn water on during our meter crew's business hours. (8:30 am to 3:30 pm Mon-Fri) Therefore, someone will need to meet the water department personnel at the property in order to restore water service.

### Q: Is there a minimum water, sewer, and refuse charge?

A: Yes, the minimum for water and sewer, based on an equivalent of 300 cu. ft. is \$38.61, and refuse is \$6.00.

### Q: How do I terminate my service?

A: You can call or come into our office at least 2 business days prior to the final date you request. We will schedule a date and time if necessary for access to the meter to retrieve a final reading. We will also need a forwarding address to send the final bill.





## Dear OMLPS Customer,

We are very pleased to announce that your community has joined other municipal electric systems in a new program to save money and energy called **Efficiency Smart**.

Efficiency Smart is working with your utility to bring the benefits of energy efficiency to your community's homeowners, renters, small to medium-sized businesses, institutions, and large commercial and industrial businesses.

To help you take advantage of the benefits of energy efficiency, we are offering financial rebates and incentives for energy-saving equipment and systems as well as technical assistance to help you better understand your energy efficiency choices.

This bill insert highlights our Appliance Recycling Initiative, but you'll find more on our website: [www.EfficiencySmart.org](http://www.EfficiencySmart.org). Look for:

- **\$50 rebates** for qualifying energy-efficient refrigerators and clothes washers.
- A link to an on-line store with **discounted energy-efficient lighting products**, such as CFLs and LEDs.
- **Rebates for over 20 types** of commercial lighting and lighting control upgrades, efficient motors, electric heating, and cooling and ventilation equipment.

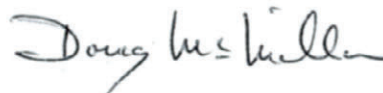
Our site includes forms and information to help you get started; or call our customer center **1-877-889-3777**, for more information.

We look forward to working with your community. Watch for special promotions this spring!

Sincerely,



Dave Cawley  
Director, Efficiency Smart



Doug McMillan  
OMLPS Energy Services and  
Sustainability Initiatives Manager  
775-7286





### Residential Efficient Lighting Online Store



#### **INITIATIVE DESCRIPTION:**

The Efficiency Smart online store offers dozens of efficient lighting products discounted at between 30% to 65% of their normal retail cost. Products include compact fluorescent lightbulbs (CFLs), CFL specialty bulbs and CFL fixtures. The online store also features educational content on how to properly select CFLs based upon their intended use. The store is managed by Energy Federation Inc. (EFI). Customers are encouraged to browse the online store as well as to look in their local retail stores to learn about these products.

#### **QUALIFYING PRODUCTS:**

- CFLs and CFL specialty products
- No LEDs at this time
- No efficient hardwired fixtures at this time

#### **QUALIFYING CONDITIONS:**

- Products must be used at a premise served by an Efficiency Smart enrolled SMU
- Purchase limit of 20 bulbs &/or fixtures per customer
- Prices are discounted at sale and additional rebates are not allowed for online store purchases
- Businesses are allowed to purchase product online (up to 20 bulbs &/or fixture per account)
- Landlords are allowed to purchase product online as long as the facility receives power from the SMU and the facility has an account number from the SMU

#### **HOW TO BUY ONLINE:**

The Efficiency Smart online store can be accessed from the "For Your Home" section of the Efficiency Smart web site ([www.efficiencysmart.org/for\\_your\\_home/home\\_lighting.aspx](http://www.efficiencysmart.org/for_your_home/home_lighting.aspx)) or by visiting [www.efi.org/efficiencysmart/](http://www.efi.org/efficiencysmart/)

#### **BENEFITS OF EFFICIENT LIGHTING PRODUCTS:**

- CFLs use 75% less energy than incandescent bulbs
- Light quality is the same and in some cases better than incandescent bulbs
- The easiest way to achieve energy efficiency is to change incandescent light bulbs to CFLs
- For more information about CFLs visit the ENERGY STAR® website at [www.energystar.gov](http://www.energystar.gov) and search for CFLs



1111 Schrock Road, Suite 203 • Columbus OH 43229 • (877) 889-3777 • [www.efficiencysmart.org](http://www.efficiencysmart.org)



## Mail-in Rebate



# \$50 off

Select ENERGY STAR®  
Qualified Refrigerators



### SAVE MORE with ENERGY STAR.

The select ENERGY STAR appliances eligible for this rebate help you **SAVE MORE** energy and money while helping to protect the environment.

For member utility account holders only.

See [http://www.energysmart.org/Efficiency\\_Smart\\_Communities.aspx](http://www.energysmart.org/Efficiency_Smart_Communities.aspx) to find out if you qualify.

**Congratulations! The select ENERGY STAR qualified refrigerator you have chosen qualifies for a \$50 mail in rebate. \***

**Select ENERGY STAR® qualified refrigerators save energy, save money, and help protect the environment.**

Join your local electric utility in their effort to help use energy wisely. Buy appliances that have earned the ENERGY STAR. Only products delivering the highest level of energy efficiency are awarded the ENERGY STAR from the U.S. Environmental Protection Agency and the U.S. Department of Energy.

**The select ENERGY STAR refrigerators eligible for this rebate:\***



Can save you up to \$215 over the life of the refrigerator\*\*



Use high efficiency compressors, improved insulation and more precise temperature and defrost mechanisms to improve efficiency



A list of eligible select ENERGY STAR qualified refrigerators is available at [www.energysmart.org](http://www.energysmart.org).  
Questions? Call 877-889-3777

\* The select ENERGY STAR refrigerators eligible for this rebate meet the ENERGY STAR specifications as the minimum qualification for a \$50 mail-in rebate. Refrigerators in Consortium for Energy Efficiency (CEE) tier 2 and 3 are eligible for this rebate, as these appliances are even more efficient than those machines listed as ENERGY STAR.

\*\* Assumes 17 year life and average cost of 10.6 cents per kilowatt hour (kWh).



[www.energysmart.org](http://www.energysmart.org) • 877-889-3777





## The ENERGY STAR® \$50 Mail-in Rebate Details:

Get \$50 back from Efficiency Smart on your purchase of a select ENERGY STAR qualified refrigerator. This rebate is good for purchases made between January 1, 2011 to December 31, 2011.

To receive your rebate:

- 1) Please fill out this form completely.
- 2) Enclose a copy of your dated sales receipt and a copy of a recent electric bill.
- 3) Mail it to the address below.
- 4) Must be a member utility account holder, see [http://www.efficiencysmart.org/Efficiency\\_Smart\\_Communities.aspx](http://www.efficiencysmart.org/Efficiency_Smart_Communities.aspx) to find out if you qualify.

Incomplete information will delay or disqualify your rebate. All rebate requests must be postmarked no later than January 31, 2012.

### Mail to:

#### Efficiency Smart - Rebate Offer

1111 Schrock Road, Suite 203  
Columbus, OH 43229

(Please DO NOT include rebate coupon with utility bill payment.)

Please fill out completely.

Your Name \_\_\_\_\_

Installation Address \_\_\_\_\_

City \_\_\_\_\_ State \_\_\_\_\_ Zip \_\_\_\_\_

Home Phone \_\_\_\_\_

Work Phone \_\_\_\_\_

Mailing Address (if different) \_\_\_\_\_

City \_\_\_\_\_ State \_\_\_\_\_ Zip \_\_\_\_\_

House type (check one in each column)

- |                            |   |                                       |
|----------------------------|---|---------------------------------------|
| <input type="radio"/> own  | <input type="radio"/> primary residence | <input type="radio"/> condo/townhouse |
| <input type="radio"/> rent | <input type="radio"/> vacation home     | <input type="radio"/> single family   |
|                            |   | <input type="radio"/> multi-family    |
|                            |   | _____ # of units                      |

### Where your new refrigerator will be used:

Your electric utility \_\_\_\_\_

Account # \_\_\_\_\_

Mfr. and Model # of select ENERGY STAR qualified refrigerator purchased \_\_\_\_\_

Name and address of store where refrigerator was purchased \_\_\_\_\_

Purchase Price \$ \_\_\_\_\_ Purchase Date \_\_\_\_\_

## Optional information:

What was the main reason you purchased a select ENERGY STAR® qualified refrigerator? Please check one:

- |   |   |
|---|---|
| <input type="radio"/> energy savings                      | <input type="radio"/> larger capacity     |
| <input type="radio"/> available rebate                    | <input type="radio"/> quieter operation   |
| <input type="radio"/> like to buy the best                | <input type="radio"/> takes up less space |
| <input type="radio"/> be more environmentally responsible | <input type="radio"/> other _____         |

Did you know about the rebate before you purchased your refrigerator?

- ☐ yes ☐ no

If yes, did the rebate influence your purchase decision?

- ☐ yes ☐ no

Why did you purchase a refrigerator at this time? Check all that apply:

- |  |  |
|--|--|
| <input type="radio"/> old machine broke                        | <input type="radio"/> remodeling         |
| <input type="radio"/> wanted upgrade                           | <input type="radio"/> new home           |
| <input type="radio"/> energy savings                           | <input type="radio"/> better performance |
| <input type="radio"/> new purchase (does not replace old unit) |  |

Have you purchased other ENERGY STAR® qualified products?

- ☐ yes ☐ no

What do you plan on doing with the old refrigerator?

- |  |   |
|--|---|
| <input type="radio"/> recycling it                         | <input type="radio"/> selling it            |
| <input type="radio"/> disposing of it                      | <input type="radio"/> giving it to a friend |
| <input type="radio"/> putting it in the garage or basement |   |
| <input type="radio"/> other _____                          |   |



**Congratulations on your decision to buy a select ENERGY STAR® qualified refrigerator. It's good for you, your family, and the environment. Thank you!**

Valid for purchases made January 1, 2011 through December 31, 2011. All rebate requests must be postmarked no later than January 31, 2012. Eligible refrigerators must be installed in a home with an electric utility account that is subscribed to the Efficiency Smart program. For a full list of utilities go to [www.efficiencysmart.org](http://www.efficiencysmart.org) or call 877-889-3777. This rebate offer may be subject to change without prior notice. This rebate may not be combined with any other Efficiency Smart offer. Efficiency Smart reserves the right to conduct field inspections to verify installations.

Limitation of liability: Efficiency Smart does not guarantee the performance of installed equipment expressly or implicitly. Limit one ENERGY STAR® refrigerator rebate per Efficiency Smart program account per year.

## Mail-in Rebate



**\$50 off**

on Select ENERGY STAR®  
Qualified Clothes Washers



### SAVE MORE with ENERGY STAR.

The select ENERGY STAR appliances eligible for this rebate help you **SAVE MORE** energy and money while helping to protect the environment.

For member utility account holders only.  
See [http://www.energysmart.org/Efficiency\\_Smart\\_Communities.aspx](http://www.energysmart.org/Efficiency_Smart_Communities.aspx) to find out if you qualify.

**ENERGY STAR® qualified clothes washers save energy, save money, and help protect the environment.**

Join your local electric utility in their effort to help use energy wisely. Buy appliances that have earned the ENERGY STAR. Only products delivering the highest level of energy efficiency are awarded the ENERGY STAR from the U.S. Environmental Protection Agency and the U.S. Department of Energy.

**The select ENERGY STAR clothes washers eligible for this rebate:\***



Can save over \$360 in energy over the life of the washing machine.\*\*



Can save over 6,000 gallons of water per year, per household.



Reduce drying time and offer gentler cleaning action which creates less wear-and-tear on your clothes than most conventional models.

**Congratulations! The select ENERGY STAR clothes washer you have chosen qualifies for a \$50 mail-in rebate because it saves more energy and water.\***

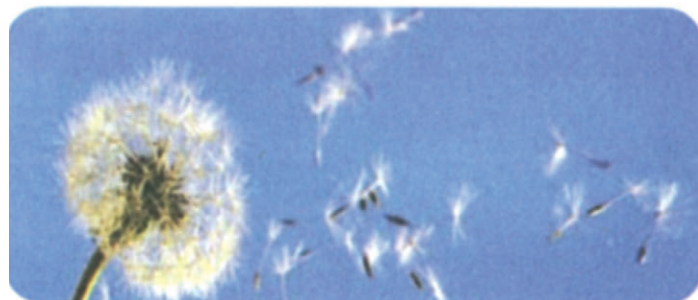
### Look for the ENERGY STAR.



A list of eligible select ENERGY STAR qualified clothes washers is available at [www.energysmart.org](http://www.energysmart.org).  
Questions? Call 877-889-3777

\* The select ENERGY STAR clothes washers eligible for rebate meet the Consortium for Energy Efficiency's (CEE) tier 2 Specifications.

\*\* Assumes 17 year life and average cost of 10.6 cents per kilowatt hour (kWh).



[www.energysmart.org](http://www.energysmart.org) • 877-889-3777







## The ENERGY STAR® \$50 Mail-in Rebate Details:

Get \$50 back from Efficiency Smart on your purchase of a select ENERGY STAR qualified clothes washer. This rebate is good for purchases made between January 1, 2011 to December 31, 2011.

To receive your rebate:

- 1) Please fill out this form completely.
- 2) Enclose a copy of your dated sales receipt and a copy of a recent electric bill.
- 3) Mail it to the address below.
- 4) Must be a member utility account holder, see [http://www.efficiencysmart.org/Efficiency\\_Smart\\_Communities.aspx](http://www.efficiencysmart.org/Efficiency_Smart_Communities.aspx) to find out if you qualify.

Incomplete information will delay or disqualify your rebate. All rebate requests must be postmarked no later than January 31, 2012.

### Mail to: Efficiency Smart - Rebate Offer

1111 Schrock Road, Suite 203  
Columbus, OH 43229

(Please DO NOT include rebate coupon with utility bill payment.)  
Please fill out completely.

Your Name \_\_\_\_\_

Installation Address \_\_\_\_\_

City \_\_\_\_\_ State \_\_\_\_\_ Zip \_\_\_\_\_

Home Phone \_\_\_\_\_

Work Phone \_\_\_\_\_

Mailing Address (if different) \_\_\_\_\_

City \_\_\_\_\_ State \_\_\_\_\_ Zip \_\_\_\_\_

This clothes washer is for use in my: ☐ home ☐ business

I have the following appliance(s) in my home:

Appliance: Fuel type:

☐ water heater ☐ electric ☐ natural gas ☐ oil ☐ propane

☐ clothes dryer ☐ electric ☐ natural gas ☐ propane

House type (check one in each column)

☐ own ☐ primary residence ☐ condo/townhouse

☐ rent ☐ vacation home ☐ single family

☐ multi-family, \_\_\_ # of units

### Where your new refrigerator will be used:

Your electric utility \_\_\_\_\_

Account # \_\_\_\_\_

Mfr. and Model # of select ENERGY STAR qualified clothes washer purchased \_\_\_\_\_

Name and address of store where clothes washer was purchased \_\_\_\_\_

Purchase Price \$ \_\_\_\_\_ Purchase Date \_\_\_\_\_

## Optional information:

What was the main reason you purchased a select ENERGY STAR® qualified clothes washer? Please check one:

- |   |  |                                     |
|---|--|-------------------------------------|
| <input type="radio"/> energy savings                      | <input type="radio"/> larger capacity      | <input type="radio"/> rebate        |
| <input type="radio"/> gentler on clothes                  | <input type="radio"/> uses less detergent  | <input type="radio"/> water savings |
| <input type="radio"/> cleaner clothes                     | <input type="radio"/> quieter operation    | <input type="radio"/> other         |
| <input type="radio"/> be more environmentally responsible | <input type="radio"/> like to buy the best | _____                               |

Did you know about the rebate before you purchased your clothes washer?

- ☐ yes ☐ no

If yes, did the rebate influence your purchase decision?

- ☐ yes ☐ no

Why did you purchase a clothes washer at this time?

Check all that apply:

- |   |   |
|---|---|
| <input type="radio"/> old machine broke | <input type="radio"/> remodeling                  |
| <input type="radio"/> wanted upgrade    | <input type="radio"/> new home                    |
| <input type="radio"/> energy savings    | <input type="radio"/> better cleaning performance |
| <input type="radio"/> water savings     |   |

Have you purchased other ENERGY STAR® qualified products?

- ☐ yes ☐ no

How did you hear about ENERGY STAR qualified products?

Check all that apply:

- |  |   |
|--|---|
| <input type="radio"/> newspaper ad         | <input type="radio"/> TV ad                     |
| <input type="radio"/> website              | <input type="radio"/> magazine ad               |
| <input type="radio"/> retailer/salesperson | <input type="radio"/> friend/relative/co-worker |
| <input type="radio"/> other                | _____   |

Your comments are welcome: \_\_\_\_\_



**Congratulations on your decision to buy a select ENERGY STAR® qualified clothes washer. It's good for you, your family, and the environment. Thank you!**

Valid for purchases made January 1, 2011 through December 31, 2011. All rebate requests must be postmarked no later than January 31, 2012. Eligible clothes washers must be installed in a home with an electric utility account that is subscribed to the Efficiency Smart program. For more information, call 877-889-3777. This rebate offer may be subject to change without prior notice. This rebate may not be combined with any other Efficiency Smart offer. Efficiency Smart reserves the right to conduct field inspections to verify installations. Limitation of liability: Efficiency Smart does not guarantee the performance of installed equipment expressly or implicitly. In accepting these financial incentives, the customer agrees that Efficiency Smart holds the sole rights to any electric system capacity credits and environmental credits associated with energy efficiency measures for which incentives have been received. Credits will be used for the benefit of Efficiency Smart ratepayers. Limit one energy efficient clothes washer rebate per Efficiency Smart program account per year.

# Saving the Oberlin Gasholder

## On the North Coast Inland Bicycle Trail and Honoring Oberlin's Underground Railroad History



As a tribute to the courage, spirit and deeply affecting experiences of the people who touched Oberlin along their journey to freedom, the City of Oberlin has secured partial

funding to restore the Gasholder Building on S. Main Street. Once fully restored, the building will serve visitors in a number of ways: It will be a Park-N-Ride facility as well as a regional visitor center that will highlight Oberlin's prominent role in the Underground Railroad.

In 2009, Oberlin City Council identified this project as a community priority. Working with a NOACA tier I Transportation Enhancement grant of \$917,600, the prospect of saving the Oberlin Gasholder is finally in sight of becoming a public reality. Under the terms of this (80%) grant, the City is required to raise \$229,400 or provide a (20%) match to the

federal funds – and while the NOACA grant will pay for the rehabilitation of the building with some surrounding park and ride site work, the end result of this project requires a fundraising effort in excess of \$2 million. (In 2003, the project received a \$200,000 Congressional earmark to cover architectural costs).

### Construction Progress:

- A Certificate of Appropriateness for the "restoration/rehabilitation of the exterior shell at the gasholder building located at 291 South Main Street" was unanimously approved by the City of Oberlin Historic Preservation Commission on March 15, 2011. The Commission's vote followed an informative presentation describing in detail the nature of the rehab efforts for the exterior of the building by Underground Railroad Center Project architect, Rex Hagerling of Columbus-based Moody-Nolan, Inc.
- On April 5, 2011, the Bill Long Foundation awarded \$500 in





grant funds to the City for the Oberlin Underground Railroad Center Implementation Team. The funds will be utilized in a collaborative project with Lorain County JVS to construct an informational kiosk (similar to the ones installed on the bike path) to offer information on the Oberlin URC project. In addition, the kiosk will provide a map of Oberlin businesses to direct cyclists and site visitors to our downtown.

- The next step in this process is finalizing the construction documents, currently with ODOT (Ohio Department of Transportation), and bidding the conical roof replacement (the first phase in the project) – as early as next month. Actual replacement and construction of the new roof is anticipated to begin as early as June 2011.

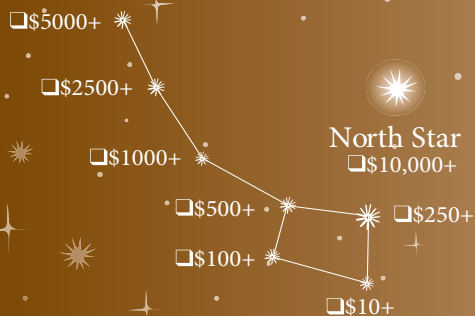
One of the more touching and provoking reasons to have a reflective center and space to learn and remember is a four year old fugitive slave child named Lee Howard Dobbins, whose fragile, old headstone is currently housed at the Oberlin College Library for special preservation. After traveling the Underground Railroad with an adoptive mother, Lee Howard was too sick to proceed further than Oberlin. He was left behind in Oberlin where he died several days later in the care of an Oberlin family. The townspeople of Oberlin rallied together and raised funds for his tombstone by contributing ten cents apiece.

Just as Oberlin residents collectively contributed for little Lee Howard's tombstone, we know that you, too, will want to contribute to this historical community project. Options

ranging from simple donations to naming rights are available, either individually or on behalf of a business or group. For more information contact:

### The Oberlin Underground Railroad Center Implementation Team

City of Oberlin - 85 South Main Street - Oberlin, Ohio 44074  
440.775.7217 or go to [www.cityofoberlin.com](http://www.cityofoberlin.com)



**Yes! I want to be part of this community effort in restoring the Gasholder Building and establishing the Oberlin Underground Railroad Center (OURC). My tax deductible donation is enclosed.**

(Please make check payable to: City of Oberlin-OUR Center Project and mail to: City of Oberlin Finance Department, 69 South Main St., Oberlin, OH 44074)

Name (as you would like it listed) \_\_\_\_\_

Address \_\_\_\_\_

City/State/Zip \_\_\_\_\_

Email \_\_\_\_\_ Phone \_\_\_\_\_

All donations/contributions received for the City of Oberlin Gasholder Project are fully tax deductible to the extent allowed by law and are being held in the Oberlin Underground Railroad Center (OURC) Fund. All donations will be publicly recognized, unless otherwise indicated.

☐ I choose not to be publicly recognized for my gift.

Donation in memory of (optional) \_\_\_\_\_

Donation in honor of (optional) \_\_\_\_\_

Donations can also be made via credit card at: [www.oberlinundergroundrailroadcenter.org](http://www.oberlinundergroundrailroadcenter.org)





# MAY 2011

## CALENDAR OF EVENTS

**Checkout the  
Oberlin College Calendar at**  
<http://new.oberlin.edu/calendar>

**E-mail**  
[businessadvisoryservices@earthlink.net](mailto:businessadvisoryservices@earthlink.net)  
to add your event to the calendar

Sunday	Monday	Tuesday	Wednesday	Thursday	Friday	Saturday
<b>1</b> OPL - The Path to Raw Food: The Road More Travelled By - 2-4pm ..... Oberlin Filmmakers - 1pm OPL	<b>2</b>	<b>3</b> Baby Storytime: 10:30am - OPL ..... OHC Guided Tours 10:30am & 1:30pm - Fee	<b>4</b> Toddler Storytime: 10:30am - OPL ..... Oberlin Writers Group 6pm OPL	<b>5</b> Cinco de Mayo ..... After Schooligans (or After School Program) 4:5pm - OPL ..... OHC Guided Tours 10:30am & 1:30pm - Fee	<b>6</b> First Friday Improv with the MAD* Factory - 7pm at First Church	<b>7</b> ..... Big Parade ..... Family Storytime 11am - OPL ..... OHC Guided Tours 10:30am & 1:30pm - Fee
<b>8</b> Mother's Day Brunch Oberlin Inn, Prestis - 11am-5pm ..... Oberlin Filmmakers - 1pm OPL ..... The Weitzheimer/Johnson House, a Usonian house designed by Frank Lloyd Wright Noon - 5pm Admission \$5	<b>9</b>	<b>10</b> Baby Storytime: 10:30am - OPL ..... OHC Guided Tours 10:30am & 1:30pm - FREE!	<b>11</b> Toddler Storytime: 10:30am - OPL ..... Oberlin Writers Group 6pm OPL	<b>12</b> ..... After Schooligans (or After School Program) 4:5pm - OPL ..... OPL - Elder Care Resources Panel - 1pm ..... OHC Guided Tours 10:30am & 1:30pm - FREE!	<b>13</b>	<b>14</b> OHC - Freedom's Friends History Walk 11:00 a.m. FREE! Reservation requested OCS Food Distribution 10:30am - 1:00pm ..... Family Storytime 11am - OPL ..... OHC Guided Tours 10:30am & 1:30pm - FREE!
<b>15</b>	<b>16</b>	<b>17</b> Baby Storytime: 10:30am - OPL ..... OHC Guided Tours 10:30am & 1:30pm - Fee	<b>18</b> Toddler Storytime: 10:30am - OPL ..... Oberlin Writers Group 6pm OPL	<b>19</b> ..... After Schooligans (or After School Program) 4:5pm - OPL ..... OHC Guided Tours 10:30am & 1:30pm - Fee	<b>20</b>	<b>21</b> OHC - Pride Day at the OHC 9:30a.m.-Noon. Bring work gloves ..... Family Storytime 11am - OPL ..... OHC Guided Tours 10:30am & 1:30pm - Fee
<b>22</b> OHC - Soldiers & Civilians History Walk Training 1-4 p.m. FREE! ..... Register in advance ..... Oberlin Filmmakers - 1pm OPL ..... The Weitzheimer/Johnson House, a Usonian house designed by Frank Lloyd Wright Noon-5pm Admission \$5	<b>23</b> City Brush Collection Pride Day Weekend (May 21-22, 2011)	<b>24</b> Baby Storytime: 10:30am - OPL ..... OHC Guided Tours 10:30am & 1:30pm - Fee	<b>25</b> Toddler Storytime: 10:30am - OPL ..... Oberlin Writers Group 6pm OPL	<b>26</b> ..... After Schooligans (or After School Program) 4:5pm - OPL ..... OHC Guided Tours 10:30am & 1:30pm - Fee	<b>27</b> OC Commencement/Reunion Weekend Through May 30th ..... OHC - Soldiers & Settlers History Walk 11 a.m. Fee/Reservation ..... OHC - Freedom's Friends History Walk 3 p.m. Fee/Reservation	<b>28</b> OHC - Freedom's Friends History Walk 11 a.m. Fee/Reservation ..... OHC - Soldiers & Civilians History Walk 3 p.m. Fee/Reservation ..... Family Storytime 11am - OPL ..... OHC Guided Tours 10:30am & 1:30pm - Fee
<b>29</b> OHC - Soldiers & Civilians History Walk 11 a.m. Fee/Reservation ..... OHC - Freedom's Friends History Walk 3 p.m. Fee/Reservation ..... Oberlin Filmmakers - 1pm OPL	<b>30</b> ..... Memorial Day ..... OHC - Freedom's Friends History Walk 1 p.m. Fee/Reservation ..... Senior "Super" Lunch Oberlin Senior Center	<b>31</b> Baby Storytime: 10:30am - OPL ..... OHC Guided Tours 10:30am & 1:30pm - Fee	Key: AMAM= Allen Art Museum; CG= Common Ground CTAC= Christ Temple Apostolic Church FAWA= Friends Association for the Visual Arts FLW= Frank Lloyd Wright	OC= Oberlin College OCS= Oberlin Community Service OOT= Ohio Dance Theatre OHC= Oberlin Heritage Center OPL= Oberlin Public Library NOVO= Northern Ohio Youth Orchestras UGRR= Underground Railroad	OHC - Soldiers & Civilians History Walk Saturday, June 4, 11 a.m. Fee/Reservation ..... OHC - I Spy Oberlin for Kids Saturday, June 4, 3 p.m. Fee/Reservation	Save even more with... Online Coupons at <a href="http://www.townmoniesave.com">www.townmoniesave.com</a>



### Oberlin City Council

Ken Sloane, President  
Sharon Soucy, Vice President  
Scott Broadwell  
Bryan Burgess  
Elizabeth Meadows  
Charles Peterson  
Kate Pilacky

### City Council Appointees

Eric Norenberg, City Manager  
Salvatore Talarico, Finance Director  
Belinda Anderson, City Council Clerk  
Eric Severs, Law Director

*City Council meetings are 1st & 3rd Mondays of  
the month in City Hall Council Chambers,  
85 South Main Street beginning at 7:30 p.m.*

*Meetings are broadcast live on Cable Channel 9.*

### City Hall Phone Numbers

Eric Norenberg .....775-7206  
City Manager

Darlene Colaso .....775-7205  
Assistant City Manager/HR Administrator

Belinda Anderson .....775-7203  
Clerk of Council

Jeff Baumann .....775-7204  
Public Works Director

Gary Boyle .....775-7182  
Planning Director

Sandra Phillips .....774-3428  
Building Department

Connie Ponder .....775-7254  
Recreational Superintendent

Steve Dupee .....775-7260  
OMLPS Director

Sandy Kohart .....775-1751  
Municipal Court Clerk

Tom Miller .....774-1061  
Police Chief

Dennis Kirin .....774-3211  
Fire Chief

David Rucker .....775-7270  
Street Department

Jerry Hade .....775-7290  
Water Department

Steve Hoffert .....775-7280  
WEPF Department

Sheri Runals .....775-7218  
Public Works/Refuse Department

Tita Reed .....775-7257  
Economic Development/Housing

*City Hall Offices are open Monday - Friday 8:30 a.m. to 5:00 p.m.*

