

<b>RIGHT-OF-WAY</b> TRACT NUMBERS	7124+21	OH-SA-022.0000 2528 FT. 153.2 RODS	OH-SA-023.0000-RD 34 FT. 2.1 RODS	OH-SA-024.0000 2438 FT. 147.8 RODS	7174+21
<b>SURVEY DATA</b> SURVEY COMPANY: FIELD BOOK: PAGES:	STA. 7129+65 PI - 8'47" R. RT STA. 7139+64 PI - 22'29" R. LT STA. 7143+68 PI - 4'30" R. LT STA. 7145+65 TOP BANK STA. 7145+69 DRAIN, DEPTH 80 FT. CENTERLINE STA. 7146+01 TOP BANK STA. 7149+47 TOP BANK STA. 7149+52 DITCH, DEPTH 0 STA. 7149+59 TOP BANK STA. 7149+66 PAVED, CR 278 CENTERLINE STA. 7149+81 TOP BANK STA. 7149+81 DITCH, DEPTH 0 FT. CENTERLINE STA. 7149+83 POWERLINE, 7149+84 TOP BANK STA. 7149+84 TOP BANK Class 1				
<b>CLASS LOCATION</b>	Class 1				
<b>PIPE MATERIAL</b>					

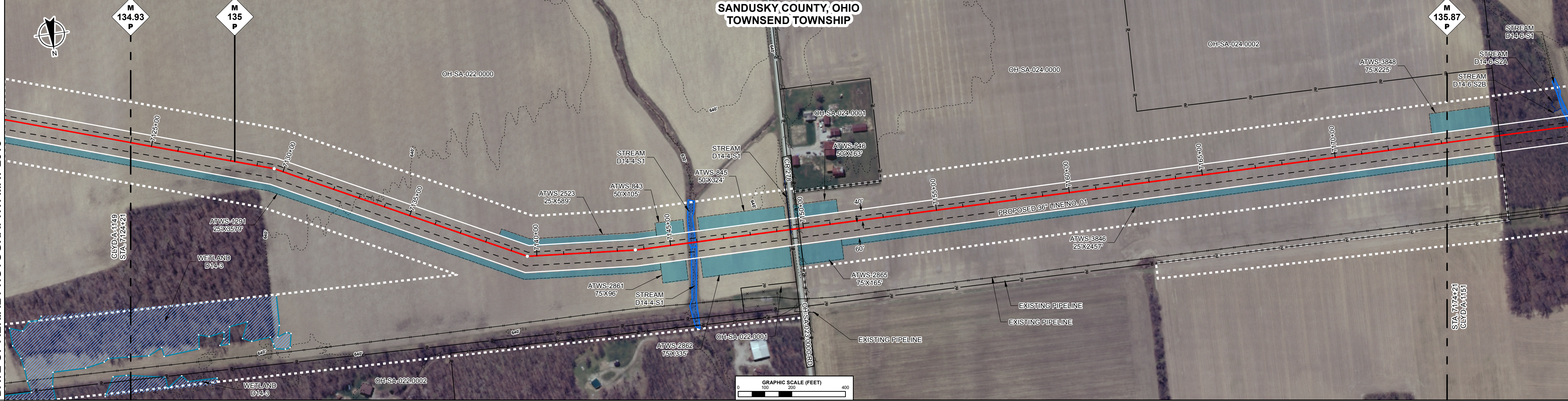
**ALIGNMENT LEGEND**

PIPELINE MILEPOST  
 PROPOSED NEXUS PIPELINE  
 INTERCONNECTING PIPELINE TO TGP  
 CONSTRUCTION LIMIT  
 STUDY CORRIDOR  
 STAGING AREA  
 WAREYARD  
 PERMANENT ROW  
 ADDITIONAL TEMPORARY WORKSPACE  
 METERING & REGULATION STATION (M&R) SITE  
 COMPRESSOR STATION SITE  
 FACILITIES TEMPORARY WORKSPACE  
 FACILITIES PERMANENT WORKSPACE  
 DELINEATED WETLAND BOUNDARY  
 DELINEATED WATERBODY BANK  
 DELINEATED WATERBODY CENTERLINE  
 APPROXIMATE WETLAND BOUNDARY  
 APPROXIMATE WATERBODY BANK  
 APPROXIMATE WATERBODY CENTERLINE  
 PERMANENT ACCESS ROAD  
 TEMPORARY ACCESS ROAD

PROPERTY LINE  
 CONTOUR  
 MUNICIPALITY LINE  
 FENCE  
 FOREIGN PIPELINE  
 POWERLINE  
 WATER PIPELINE  
 RAILROAD TRACK  
 TELEPHONE LINE  
 TEE TAP  
 BLOW OFF VALVE  
 TOWER  
 HORIZONTAL DIRECTIONAL DRILL ENTRY/EXIT  
 TANK  
 WELL: GAS WATER OIL UNKNOWN

UTILITY LINES  
 MAINLINE VALVE (MLV)  
 MICROWAVE TOWER

DATE OF AERIAL PHOTOGRAPHY: MAY 2015



**ENVIRONMENTAL DATA**

STA. 7145+69 STREAM STRONG  
 STA. 7145+68 STREAM STRONG  
 CREEK D14-4-S1 EXT

STA. 7149+51 CENTERLINE OF  
 CREEK

**E & S TYPICALS**

E&S TYPICALS WILL BE USED AS A PLAN AND WILL HAVE FURTHER INPUT FROM ENVIRONMENTAL INSPECTOR.

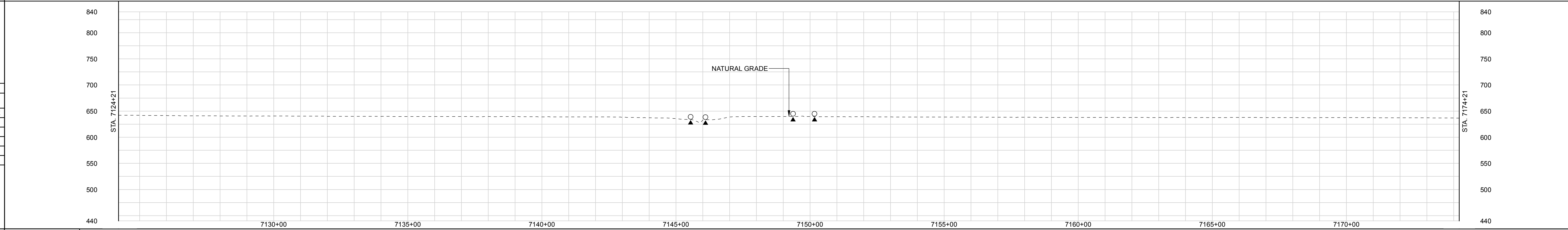
**PROFILE**

THE LOCATION OF TRENCH PLUGS AND SLOPE BREAKERS ARE INTENDED TO BE USED AS A GUIDELINE ONLY. EXACT LOCATION TO BE DETERMINED IN THE FIELD.

SLOPE BREAKERS  
 TRENCH PLUG

PERMANENT SLOPE BREAKER & TRENCH PLUG SPACING			
%SLOPE	SLOPE BREAKER SPACING (FT)	%SLOPE	TRENCH PLUG SPACING (FT)
5-15%	300 FT	< 5%	NO STRUCTURE
15-30%	200 FT	5-15%	300 FT
> 30%	100 FT	15-30%	200 FT
		> 30%	100 FT

IN AG FIELDS AND RESIDENTIAL AREAS WHERE SLOPE BREAKERS ARE NOT TYPICALLY REQUIRED, INSTALL PERMANENT TRENCH PLUGS AT THE SAME SPACING AS IF PERMANENT SLOPE BREAKERS WERE REQUIRED. (FERC PLAN)



LAND USE CLASSIFICATION			SOILS	
AG AGRICULTURAL	OL OPEN LAND	IC INDUSTRIAL/COMMERCIAL	LAND USE	
FW FOREST/WOODLAND	R RESIDENTIAL	OW OPEN WATER	% SLOPE	

AG	OL	IC	AG	IC	AG
< 5%			5-15%		< 5%

<b>GENERAL NOTES:</b> 1.) ALL STATIONING IS IN U.S. FEET. 2.) CONTOUR LINES AND ELEVATIONS ARE IN U.S. FEET.	<b>ENGINEERING APPROVALS</b> DRAWN BY: _____ NAME SIGNATURE DATE BID SIGNATURE DATE CONSTRUCTION SIGNATURE DATE	<b>CLYD - WATE</b> NEXUS PROJECT PROPOSED 36" LINE NO. 01 ALIGNMENT SHEET LOC. SANDUSKY COUNTY, OHIO YEAR: 2017 W.B.S. Scale 1" = 200'		
	DWG. NO. _____ DESCRIPTION REFERENCE DRAWINGS	REV DSN CK _____ DESCRIPTION REVISIONS	ITEM _____ DESCRIPTION MATERIALS	QTY _____
	ISSUED FOR FERC FILING (11/2015) ISSUED FOR FERC FILING (11/2015)	ISSUED FOR FERC FILING (11/2015) ISSUED FOR FERC FILING (11/2015)	CLYD-A-1150	REV. 0A

RIGHT-OF-WAY		OH-SA-024.0000 197 FT. 11.9 RODS	OH-SA-025.0000 2616 FT. 158.5 RODS	OH-SA-026.0000-RD 47 FT. 2.8 RODS	OH-SA-027.0000 2140 FT. 129.7 RODS	7224+21
TRACT NUMBERS		7174+21	7176+18	7202-34	7202-81	

SURVEY DATA		STA. 7178+74 TOP BANK STA. 7178+74 TOE BANK STA. 7178+68 TOE BANK STA. 7178+95 TOP BANK	STA. 7192+41 PI = 27.65 RT	STA. 7202+23 POWERLINE, CLEARANCE 20 FT. STA. 7202+23 TOP BANK STA. 7202+48 TOP BANK STA. 7202+48 ROAD EDGE STA. 7202+48 ROAD EDGE, CR 288 STA. 7202+70 ROAD EDGE STA. 7202+70 TOP BANK STA. 7202+70 TOE BANK STA. 7202+82 TOP BANK	
SURVEY COMPANY:					
FIELD BOOK:					
PAGES:					

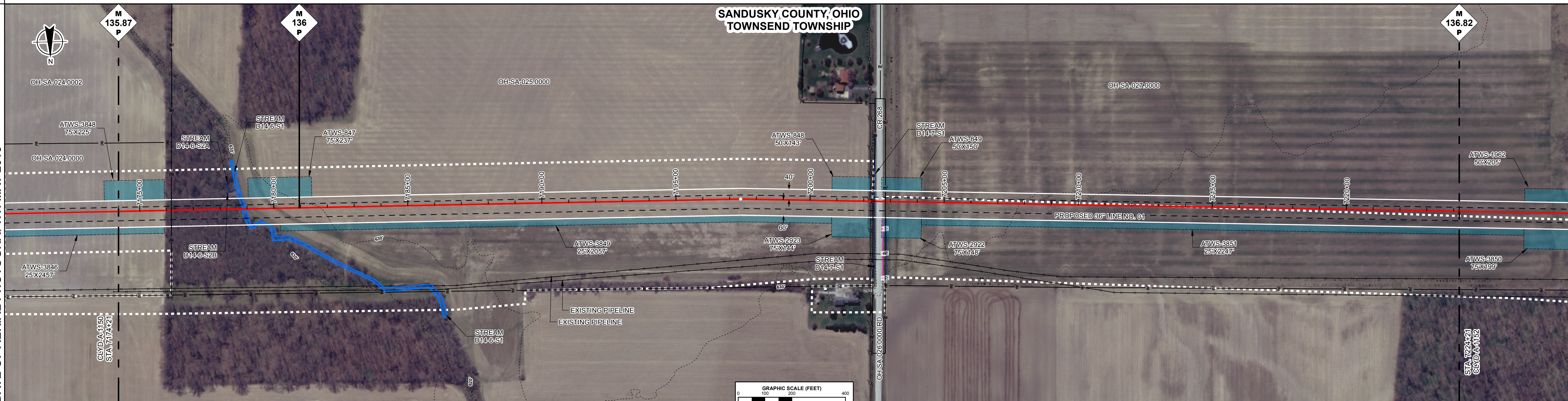
CLASS LOCATION	Class 1
----------------	---------

PIPE MATERIAL	
---------------	--

**ALIGNMENT LEGEND**

PIPELINE MILEPOST	
PROPOSED NEXUS PIPELINE	
INTERCONNECTING PIPELINE TO TGP	
CONSTRUCTION LIMIT	
STUDY CORRIDOR	
STAGING AREA	
WAREYARD	
PERMANENT ROW	
ADDITIONAL TEMPORARY WORKSPACE	
METERING & REGULATION STATION (M&R) SITE	
COMPRESSOR STATION SITE	
FACILITIES TEMPORARY WORKSPACE	
FACILITIES PERMANENT WORKSPACE	
DELINEATED WETLAND BOUNDARY	
DELINEATED WATERBODY BANK	
DELINEATED WATERBODY CENTERLINE	
APPROXIMATE WETLAND BOUNDARY	
APPROXIMATE WATERBODY BANK	
APPROXIMATE WATERBODY CENTERLINE	
PERMANENT ACCESS ROAD	
TEMPORARY ACCESS ROAD	
PROPERTY LINE	
CONTOUR	
MUNICIPALITY LINE	
FENCE	
FOREIGN PIPELINE	
POWERLINE	
WATER PIPELINE	
RAILROAD TRACK	
TELEPHONE LINE	
TEE TAP	
BLOW OFF VALVE	
TOWER	
HORIZONTAL DIRECTIONAL DRILL ENTRY/EXIT	
TANK	
WELL: GAS	
WELL: WATER	
WELL: OIL	
WELL: UNKNOWN	

DATE OF AERIAL PHOTOGRAPHY: MAY 2015



**ENVIRONMENTAL DATA**

STA. 7178+69 STREAM FULLER CREEK D14-6-S1 ENTER	STA. 7192+41 STREAM FULLER CREEK D14-6-S1 ENTER
STA. 7179+22 STREAM FULLER CREEK D14-6-S1 ENTER	STA. 7202+82 STREAM FULLER CREEK D14-6-S1 ENTER

**E & S TYPICALS**

E&S TYPICALS WILL BE USED AS A PLAN AND WILL HAVE FURTHER INPUT FROM ENVIRONMENTAL INSPECTOR.

PERMANENT SLOPE BREAKER & TRENCH PLUG SPACING			
%SLOPE	SLOPE BREAKER SPACING (FT)	%SLOPE	TRENCH PLUG SPACING (FT)
5-15%	300 FT	< 5%	NO STRUCTURE
15-30%	200 FT	5-15%	300 FT
> 30%	100 FT	15-30%	200 FT
		> 30%	100 FT

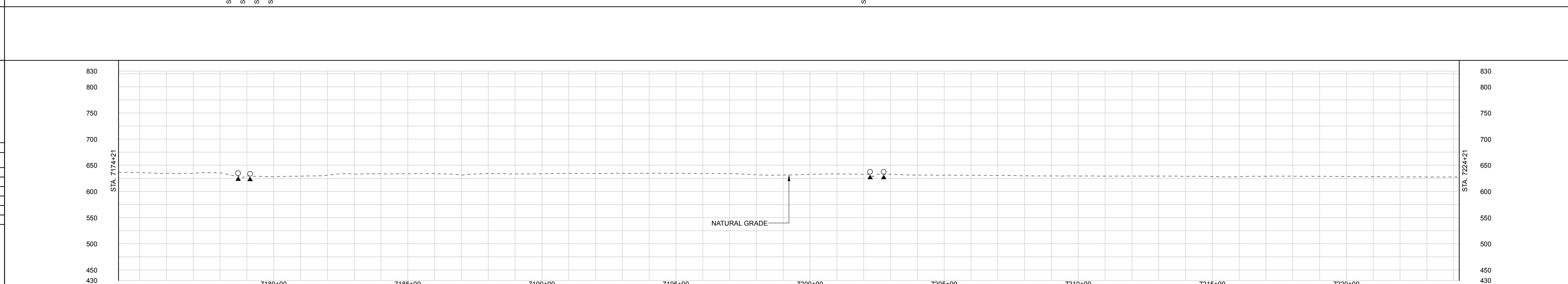
IN AG FIELDS AND RESIDENTIAL AREAS WHERE SLOPE BREAKERS ARE NOT TYPICALLY REQUIRED, INSTALL PERMANENT TRENCH PLUGS AT THE SAME SPACING AS IF PERMANENT SLOPE BREAKERS WERE REQUIRED. (FERC PLAN)

**PROFILE**

THE LOCATION OF TRENCH PLUGS AND SLOPE BREAKERS ARE INTENDED TO BE USED AS A GUIDELINE ONLY. EXACT LOCATION TO BE DETERMINED IN THE FIELD.

SLOPE BREAKERS

TRENCH PLUG



**LAND USE CLASSIFICATION**

AG	AGRICULTURAL	OL	OPEN LAND	IC	INDUSTRIAL/COMMERCIAL
FW	FOREST/WOODLAND	R	RESIDENTIAL	OW	OPEN WATER

**SOILS**

LAND USE	AG	FW	OW	IC	OL	AG
% SLOPE	< 5%	5-15%				< 5%

DWG. NO.	DESCRIPTION	REV	DSN	CK	DESCRIPTION	ITEM	QTY	GENERAL NOTES: 1.) ALL STATIONING IS IN U.S. FEET. 2.) CONTOUR LINES AND ELEVATIONS ARE IN U.S. FEET.	<b>ENGINEERING APPROVALS</b>				<b>CLYD - WATE</b> NEXUS PROJECT PROPOSED 36" LINE NO. 01 ALIGNMENT SHEET  LOC. SANDUSKY COUNTY, OHIO YEAR: 2017   W.B.S.   Scale 1" = 200'   CLYD-A-1151			NEXUS GAS TRANSMISSION	REV. 0A
									DRAWN BY:	BID	CONSTRUCTION						
	REFERENCE DRAWINGS				REVISIONS				NAME	SIGNATURE	DATE	SIGNATURE	DATE				

**RIGHT-OF-WAY**

TRACT NUMBERS

7224+21

OH-SA-027.0000  
460 FT.  
27.9 RODS

7228+81

OH-SA-028.0000  
2501 FT.  
157.0 RODSOH-SA-029.0000-RD  
44 FT.  
2.7 RODSOH-SA-030.0000  
368 FT.  
22.3 RODSOH-SA-030.0100-RD  
20 FT.  
1.2 RODSOH-SA-031.0000  
1517 FT.  
91.9 RODS

7274+21

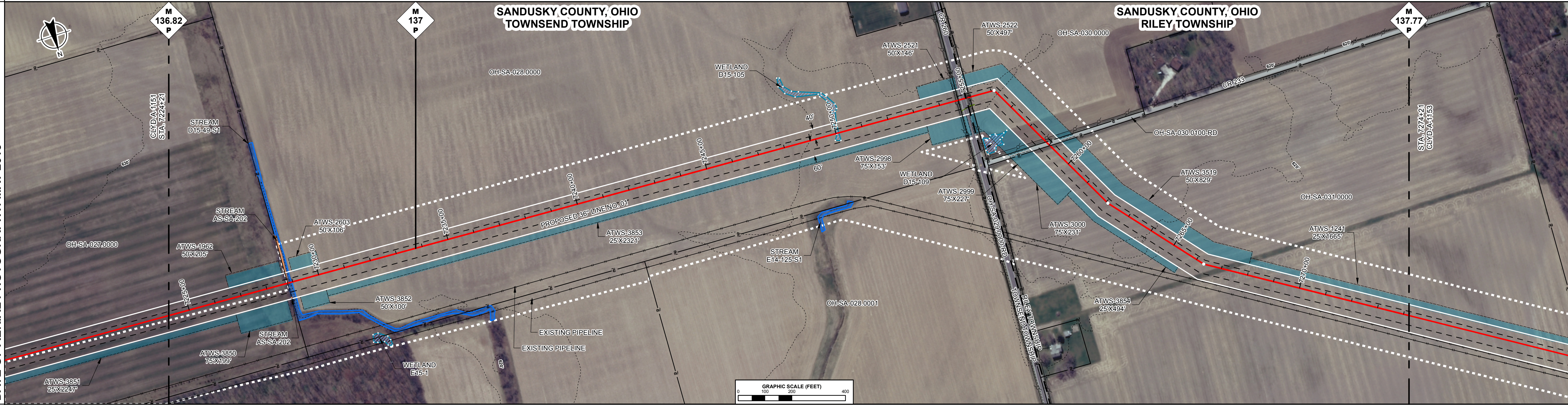
**SURVEY DATA**SURVEY COMPANY:  
FIELD BOOK:  
PAGES:**CLASS LOCATION**

Class 1

**PIPE MATERIAL****ALIGNMENT LEGEND**

- PIPELINE MILEPOST
- PROPOSED NEXUS PIPELINE
- INTERCONNECTING PIPELINE TO TGP
- CONSTRUCTION LIMIT
- STUDY CORRIDOR
- STAGING AREA
- WAREYARD
- PERMANENT ROW
- ADDITIONAL TEMPORARY WORKSPACE
- METERING & REGULATION STATION (M&R) SITE
- COMPRESSOR STATION SITE
- FACILITIES TEMPORARY WORKSPACE
- FACILITIES PERMANENT WORKSPACE
- DELINEATED WETLAND BOUNDARY
- DELINEATED WATERBODY BANK
- DELINEATED WATERBODY CENTERLINE
- APPROXIMATE WETLAND BOUNDARY
- APPROXIMATE WATERBODY BANK
- APPROXIMATE WATERBODY CENTERLINE
- PERMANENT ACCESS ROAD
- TEMPORARY ACCESS ROAD
- PROPERTY LINE
- CONTOUR
- MUNICIPALITY LINE
- FENCE
- FOREIGN PIPELINE
- POWERLINE
- WATER PIPELINE
- RAILROAD TRACK
- TELEPHONE LINE
- TEE TAP
- BLOW OFF VALVE
- TOWER
- HORIZONTAL DIRECTIONAL DRILL ENTRY/EXIT
- TANK
- WELL: GAS WATER OIL UNKNOWN
- UTILITY LINES
- MAINLINE VALVE (MLV)
- MICROWAVE TOWER

DATE OF AERIAL PHOTOGRAPHY: MAY 2015

**ENVIRONMENTAL DATA**

STA. 7228+81 STREAM TRIBUTARY TO FULLER CREEK D15-49-S1 ENTER

STA. 7228+81 STREAM TRIBUTARY TO FULLER CREEK AS-SA-202 ENTER

STA. 7228+83 STREAM TRIBUTARY TO FULLER CREEK AS-SA-202 ENTER

STA. 7228+87 STREAM TRIBUTARY TO FULLER CREEK D15-49-S1 EXIT

STA. 7269+91 WETLAND D15-105 ENTER

STA. 7269+11 WETLAND D15-105 EXIT

STA. 7267+18 WETLAND D15-109 ENTER

STA. 7267+78 WETLAND D15-109 EXIT

**E & S TYPICALS**

E&amp;S TYPICALS WILL BE USED AS A PLAN AND WILL HAVE FURTHER INPUT FROM ENVIRONMENTAL INSPECTOR.

**PROFILE**

THE LOCATION OF TRENCH PLUGS AND SLOPE BREAKERS ARE INTENDED TO BE USED AS A GUIDELINE ONLY. EXACT LOCATION TO BE DETERMINED IN THE FIELD.

SLOPE BREAKERS

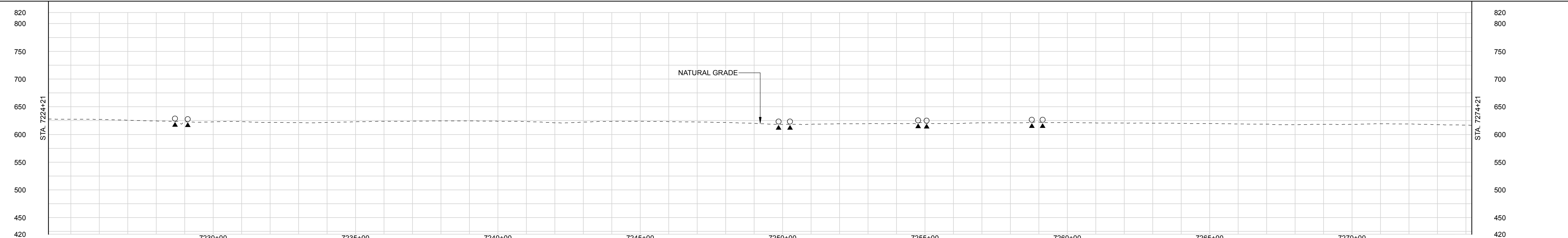
TRENCH PLUG

PERMANENT SLOPE BREAKER & TRENCH PLUG SPACING			
%SLOPE	SLOPE BREAKER SPACING (FT)	%SLOPE	TRENCH PLUG SPACING (FT)
5-15%	300 FT	< 5%	NO STRUCTURE
15-30%	200 FT	5-15%	300 FT
> 30%	100 FT	15-30%	200 FT
		> 30%	100 FT

IN AG FIELDS AND RESIDENTIAL AREAS WHERE SLOPE BREAKERS ARE NOT TYPICALLY REQUIRED, INSTALL PERMANENT TRENCH PLUGS AT THE SAME SPACING AS IF PERMANENT SLOPE BREAKERS WERE REQUIRED. (FERC PLAN)

**LAND USE CLASSIFICATION**

AG	OL	IC
AGRICULTURAL	OPEN LAND	INDUSTRIAL/COMMERCIAL
FW	FOREST/WOODLAND	R
		RESIDENTIAL
		OW
		OPEN WATER

**SOILS****LAND USE****% SLOPE****GENERAL NOTES:**

- ALL STATIONING IS IN U.S. FEET.
- CONTOUR LINES AND ELEVATIONS ARE IN U.S. FEET.

**ENGINEERING APPROVALS**

DRAWN BY:	BID		CONSTRUCTION	
	NAME	SIGNATURE	DATE	SIGNATURE

**CLYD - WATE**  
**NEXUS PROJECT**  
PROPOSED 36" LINE NO. 01  
ALIGNMENT SHEET

LOC. SANDUSKY COUNTY, OHIO

YEAR: 2017 | W.B.S. | Scale 1" = 200'



CLYD-A-1152

REV. 0A

IG#

OA					
0					
	ISSUED FOR FERC FILING (11/2015)				
	ISSUED FOR FERC FILING (11/2015)				
REV	DSN	CK		DESCRIPTION	ITEM
0				DESCRIPTION	
0				REVISIONS	
					QTY
				DESCRIPTION	
				MATERIALS	

<b>RIGHT-OF-WAY</b>	7274+21	<b>OH-SA-031.0000</b> 688 FT. 41.7 RODS	7281+09	<b>OH-SA-032.0000</b> 760 FT. 46.1 RODS	7288+69	<b>OH-SA-033.0000</b> 1525 FT. 92.4 RODS	7303+94	<b>OH-SA-034.0000</b> 221 FT. 13.4 RODS	7306+19	<b>OH-SA-035.0000</b> 1113 FT. 67.5 RODS	7317+28	<b>OH-SA-036.0000-RD</b> 35 FT. 2.1 RODS	<b>OH-SA-037.0000</b> 469 FT. 28.4 RODS	<b>OH-SA-038.0000</b> 189 FT. 11.5 RODS	7324+21
<b>SURVEY DATA</b>	SURVEY COMPANY: FIELD BOOK: PAGES:														

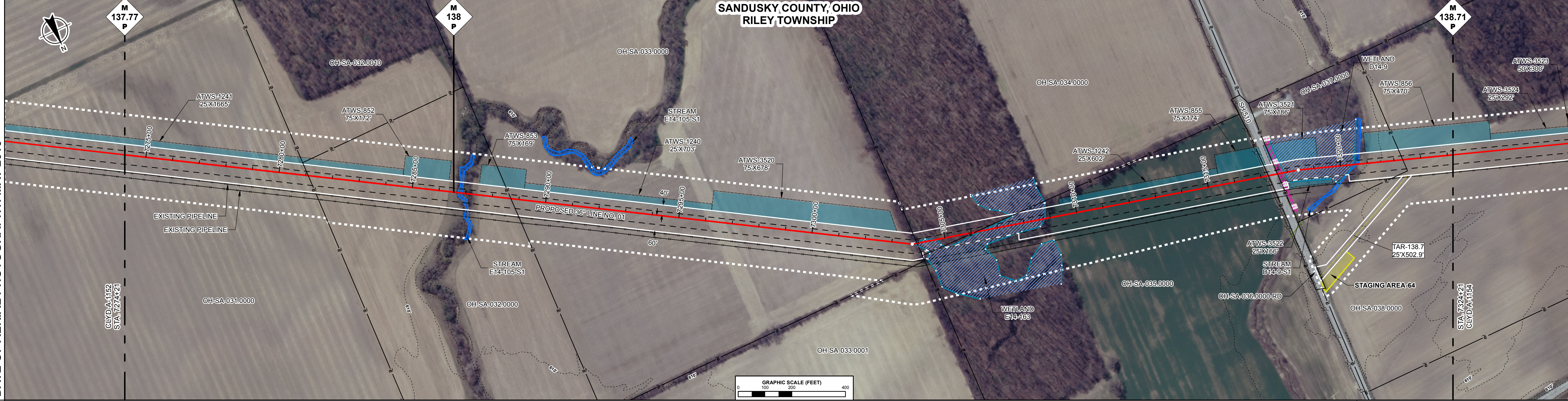
**CLASS LOCATION** Class 1

**PIPE MATERIAL**

**ALIGNMENT LEGEND**

DATE OF AERIAL PHOTOGRAPHY: MAY 2015

PIPELINE MILEPOST	6.4
PROPOSED NEXUS PIPELINE	[Symbol]
INTERCONNECTING PIPELINE TO TGP	[Symbol]
CONSTRUCTION LIMIT	[Symbol]
STUDY CORRIDOR	[Symbol]
STAGING AREA	[Symbol]
WAREYARD	[Symbol]
PERMANENT ROW	[Symbol]
ADDITIONAL TEMPORARY WORKSPACE	[Symbol]
METERING & REGULATION STATION (M&R) SITE	[Symbol]
COMPRESSOR STATION SITE	[Symbol]
FACILITIES TEMPORARY WORKSPACE	[Symbol]
FACILITIES PERMANENT WORKSPACE	[Symbol]
DELINEATED WETLAND BOUNDARY	[Symbol]
DELINEATED WATERBODY BANK	[Symbol]
DELINEATED WATERBODY CENTERLINE	[Symbol]
APPROXIMATE WETLAND BOUNDARY	[Symbol]
APPROXIMATE WATERBODY BANK	[Symbol]
APPROXIMATE WATERBODY CENTERLINE	[Symbol]
PERMANENT ACCESS ROAD	[Symbol]
TEMPORARY ACCESS ROAD	[Symbol]
PROPERTY LINE	[Symbol]
CONTOUR	[Symbol]
MUNICIPALITY LINE	[Symbol]
FENCE	[Symbol]
FOREIGN PIPELINE	[Symbol]
POWERLINE	[Symbol]
WATER PIPELINE	[Symbol]
RAILROAD TRACK	[Symbol]
TELEPHONE LINE	[Symbol]
TEE TAP	[Symbol]
BLOW OFF VALVE	[Symbol]
TOWER	[Symbol]
HORIZONTAL DIRECTIONAL DRILL ENTRY/EXIT	[Symbol]
TANK	[Symbol]
WELL: GAS	[Symbol]
WELL: WATER	[Symbol]
WELL: OIL	[Symbol]
WELL: UNKNOWN	[Symbol]
UTILITY LINES	[Symbol]
MAINLINE VALVE (MLV)	[Symbol]
MICROWAVE TOWER	[Symbol]



**ENVIRONMENTAL DATA**

STA. 7286+70 STREAM PICKEREL CREEK E14-105-S1 ENTER	STA. 7287+14 STREAM PICKEREL CREEK E14-105-S1 EXIT
STA. 7303+84 WETLAND E14-163 ENTER	STA. 7304+96 WETLAND E14-163 EXIT
STA. 7305+93 WETLAND E14-163 ENTER	STA. 7306+88 WETLAND E14-163 EXIT
STA. 7317+60 WETLAND D14-9 ENTER	
STA. 7320+17 STREAM LITTLE RACCOON CREEK D14-9-S1	STA. 7320+58 WETLAND D14-9-S1
STA. 7320+74 STREAM LITTLE RACCOON CREEK D14-9-S1	

**E & S TYPICALS**

E&S TYPICALS WILL BE USED AS A PLAN AND WILL HAVE FURTHER INPUT FROM ENVIRONMENTAL INSPECTOR.

**PROFILE**

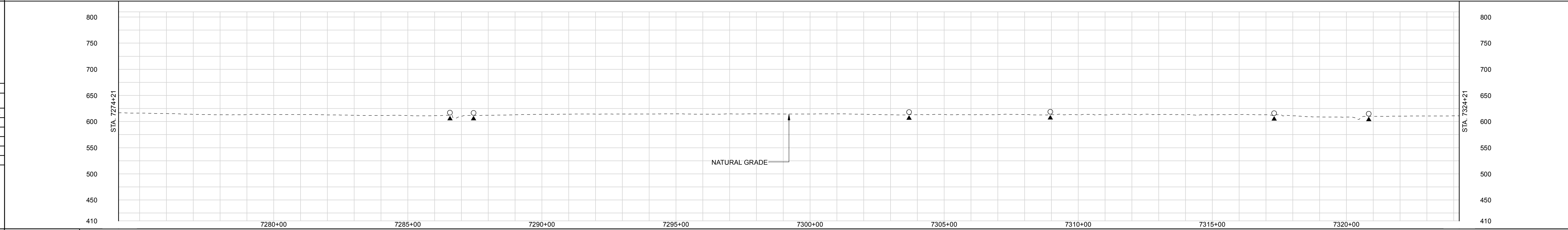
THE LOCATION OF TRENCH PLUGS AND SLOPE BREAKERS ARE INTENDED TO BE USED AS A GUIDELINE ONLY. EXACT LOCATION TO BE DETERMINED IN THE FIELD.

SLOPE BREAKERS

TRENCH PLUG

PERMANENT SLOPE BREAKER & TRENCH PLUG SPACING			
%SLOPE	SLOPE BREAKER SPACING (FT)	%SLOPE	TRENCH PLUG SPACING (FT)
5-15%	300 FT	< 5%	NO STRUCTURE
15-30%	200 FT	5-15%	300 FT
> 30%	100 FT	15-30%	200 FT
		> 30%	100 FT

IN AG FIELDS AND RESIDENTIAL AREAS WHERE SLOPE BREAKERS ARE NOT TYPICALLY REQUIRED, INSTALL PERMANENT TRENCH PLUGS AT THE SAME SPACING AS IF PERMANENT SLOPE BREAKERS WERE REQUIRED. (FERC PLAN)



<b>LAND USE CLASSIFICATION</b>			<b>SOILS</b>		
AG AGRICULTURAL	OL OPEN LAND	IC INDUSTRIAL/COMMERCIAL	AG	OL DW F/W	AG
FW FOREST/WOODLAND	R RESIDENTIAL	OW OPEN WATER	< 5%	5-15%	< 5%
			<b>% SLOPE</b>		

<b>GENERAL NOTES:</b> 1.) ALL STATIONING IS IN U.S. FEET. 2.) CONTOUR LINES AND ELEVATIONS ARE IN U.S. FEET.	<b>ENGINEERING APPROVALS</b>		<b>CLYD - WATE NEXUS PROJECT</b> PROPOSED 36" LINE NO. 01 ALIGNMENT SHEET LOC. SANDUSKY COUNTY, OHIO		
	DRAWN BY: NAME	BID SIGNATURE			
	DWG. NO. REFERENCE DRAWINGS	REV DSN CK DESCRIPTION REVISIONS	ITEM DESCRIPTION MATERIALS	QTY	

<b>RIGHT-OF-WAY</b> TRACT NUMBERS	7324+21	OH-SA-038.0000 690 FT. 41.8 RODS	7331+09	OH-SA-039.0000 1348 FT. 81.7 RODS	7344+57	OH-SA-040.0000 1018 FT. 61.7 RODS	7354+75	OH-SA-041.0000-RD 82 FT. 5.0 RODS	7355+57	OH-SA-042.0000 844 FT. 51.2 RODS	7364+01	OH-SA-043.0000 868 FT. 52.6 RODS	7374+69	OH-SA-044.0000-RD 13 FT. 0.8 RODS	7374+82	OH-SA-045.0000 139 FT. 8.4 RODS	7374+21
<b>SURVEY DATA</b> SURVEY COMPANY: FIELD BOOK: PAGES:	STA. 7330+14 PL - 172'59" LT STA. 7343+41 TOP BANK STA. 7343+43 DITCH DEPTH 0.7 FT. CENTERLINE STA. 7343+44 TOP BANK STA. 7347+90 PL - 28'59" RT STA. 7354+28 ROAD EDGE STA. 7354+48 ROAD EDGE STA. 7354+72 POWERLINE CLEARANCE 18 FT. STA. 7354+75 STA. 7354+88 TOE BANK FT. CENTERLINE DEPTH 0 STA. 7354+90 TOE BANK STA. 7355+00 TOP BANK STA. 7355+21 PAVED, SH 412 CENTERLINE EDGE STA. 7355+43 TOP BANK STA. 7355+54 TOE BANK STA. 7355+57 DITCH DEPTH 0 STA. 7355+60 TOE BANK STA. 7355+70 TOP BANK STA. 7362+88 PL - 20'14" LT STA. 7371+47 OIL PL STA. 7371+49 TOP BANK STA. 7371+51 CENTERLINE CLEARANCE 25 FT. STA. 7371+56 DITCH DEPTH 0 FT. CENTERLINE STA. 7371+62 ROAD EDGE STA. 7371+72 PAVED, CR 244 CENTERLINE EDGE STA. 7371+88 DITCH DEPTH 0 FT. CENTERLINE STA. 7371+90 TOP BANK																

**CLASS LOCATION**  
Class 1

**PIPE MATERIAL**

**ALIGNMENT LEGEND**

PIPELINE MILEPOST

PROPOSED NEXUS PIPELINE

INTERCONNECTING PIPELINE TO TGP

CONSTRUCTION LIMIT

STUDY CORRIDOR

STAGING AREA

WAREYARD

PERMANENT ROW

ADDITIONAL TEMPORARY WORKSPACE

METERING & REGULATION STATION (M&R) SITE

COMPRESSOR STATION SITE

FACILITIES TEMPORARY WORKSPACE

FACILITIES PERMANENT WORKSPACE

DELINEATED WETLAND BOUNDARY

DELINEATED WATERBODY BANK

DELINEATED WATERBODY CENTERLINE

APPROXIMATE WETLAND BOUNDARY

APPROXIMATE WATERBODY BANK

APPROXIMATE WATERBODY CENTERLINE

PERMANENT ACCESS ROAD

TEMPORARY ACCESS ROAD

PROPERTY LINE

CONTOUR

MUNICIPALITY LINE

FENCE

FOREIGN PIPELINE

POWERLINE

WATER PIPELINE

RAILROAD TRACK

TELEPHONE LINE

TEE TAP

BLOW OFF VALVE

TOWER

HORIZONTAL DIRECTIONAL DRILL ENTRY/EXIT

TANK

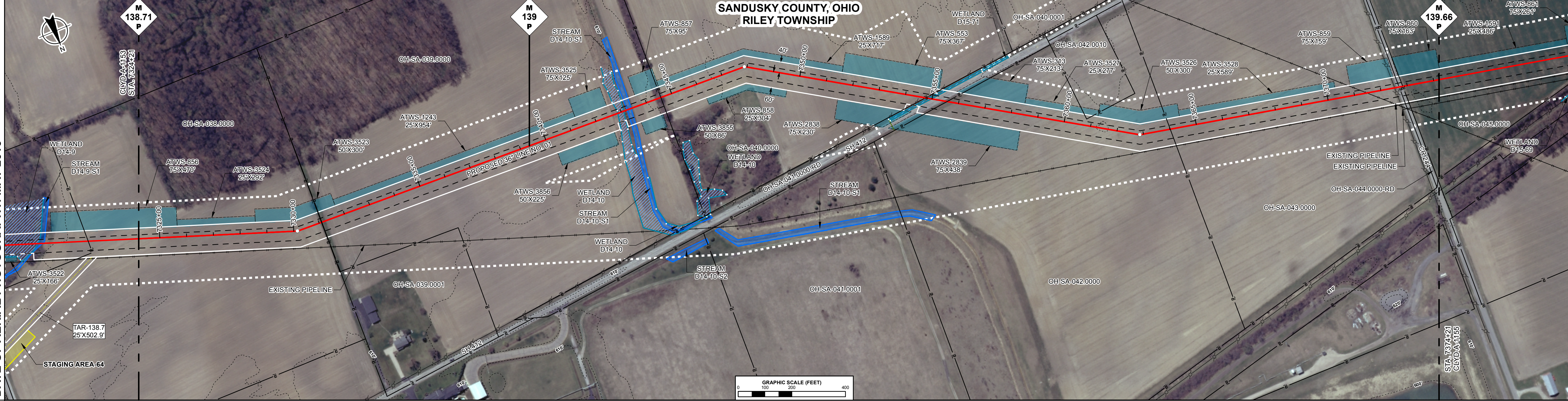
WELL: GAS WATER OIL UNKNOWN

UTILITY LINES

MAINLINE VALVE (MLV)

MICROWAVE TOWER

DATE OF AERIAL PHOTOGRAPHY: MAY 2015



**ENVIRONMENTAL DATA**

STA. 7342+81 WETLAND D14-10  
ENTER  
EXIT

STA. 7343+14 WETLAND D14-10  
ENTER  
EXIT

STA. 7343+20 STREAM TRIBUTARY  
TO LITTLE RACCOON CREEK  
D14-10-S1 ENTER  
D14-10-S1 EXIT

STA. 7343+41 STREAM TRIBUTARY  
TO LITTLE RACCOON CREEK  
D14-10-S1 ENTER  
D14-10-S1 EXIT

STA. 7354+63 WETLAND D15-71  
ENTER

STA. 7354+19 WETLAND D15-71  
EXIT

STA. 7355+40 WETLAND D15-71  
ENTER

STA. 7355+47 WETLAND D15-71  
EXIT

**E & S TYPICALS**

E&S TYPICALS WILL BE USED AS A PLAN AND WILL HAVE FURTHER INPUT FROM ENVIRONMENTAL INSPECTOR.

**PROFILE**

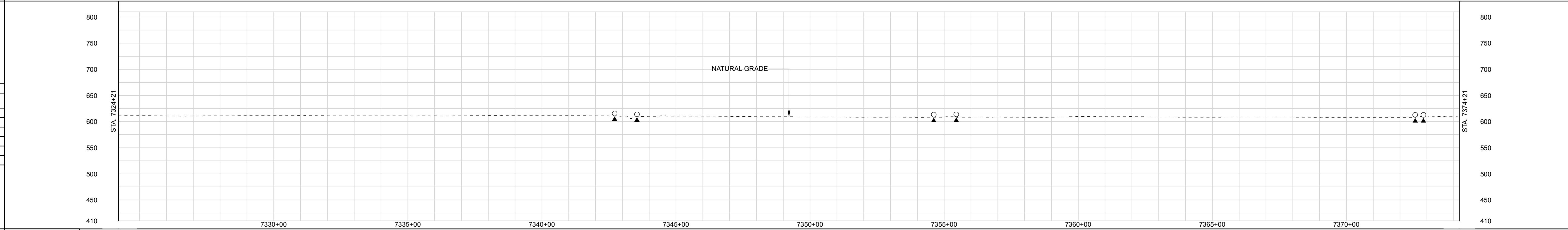
THE LOCATION OF TRENCH PLUGS AND SLOPE BREAKERS ARE INTENDED TO BE USED AS A GUIDELINE ONLY. EXACT LOCATION TO BE DETERMINED IN THE FIELD.

SLOPE BREAKERS

TRENCH PLUG

PERMANENT SLOPE BREAKER & TRENCH PLUG SPACING			
%SLOPE	SLOPE BREAKER SPACING (FT)	%SLOPE	TRENCH PLUG SPACING (FT)
5-15%	300 FT	< 5%	NO STRUCTURE
15-30%	200 FT	5-15%	300 FT
> 30%	100 FT	15-30%	200 FT
		> 30%	100 FT

IN AG FIELDS AND RESIDENTIAL AREAS WHERE SLOPE BREAKERS ARE NOT TYPICALLY REQUIRED, INSTALL PERMANENT TRENCH PLUGS AT THE SAME SPACING AS IF PERMANENT SLOPE BREAKERS WERE REQUIRED. (FERC PLAN)



LAND USE CLASSIFICATION			SOILS		
AG	OL	IC	LAND USE		
AG	OL	IC	AG	OL	
FW	R	OW	% SLOPE		

AG	OL	IC	AG	OL	AG	IC	AG
			< 5%	5-15%			< 5%

DWG. NO.	DESCRIPTION	REV	DSN	CK	DESCRIPTION	ITEM	DESCRIPTION	QTY
	REFERENCE DRAWINGS				REVISIONS		MATERIALS	

OB	ISSUED FOR FERC FILING (11/2015)
OA	ISSUED FOR FERC FILING (11/2015)
O	ISSUED FOR FERC FILING (11/2015)

**GENERAL NOTES:**

- ALL STATIONING IS IN U.S. FEET.
- CONTOUR LINES AND ELEVATIONS ARE IN U.S. FEET.

**ENGINEERING APPROVALS**

DRAWN BY:		BID		CONSTRUCTION	
NAME	SIGNATURE	DATE	SIGNATURE	DATE	DATE

**CLYD - WATE**  
NEXUS PROJECT  
PROPOSED 36" LINE NO. 01  
ALIGNMENT SHEET

**LOC. SANDUSKY COUNTY, OHIO**

YEAR: 2017    W.B.S.    Scale 1" = 200'

**CLYD-A-1154**    REV. 0B

<b>RIGHT-OF-WAY</b>	7374+21	OH-SA-045.0000 690 FT. 41.8 RODS	OH-SA-046.0000 140 FT. 8.5 RODS	OH-SA-046.0100 200 FT. 12.1 RODS	OH-SA-047.0000 169 FT. 10.2 RODS	OH-SA-048.0000 1310 FT. 79.4 RODS	OH-SA-049.0000-RD 40 FT. 2.4 RODS	OH-SA-050.0000 2451 FT. 148.5 RODS	7424+21
<b>SURVEY DATA</b>	<b>SURVEY COMPANY:</b> <b>FIELD BOOK:</b> <b>PAGES:</b>								
<b>CLASS LOCATION</b>	Class 1								
<b>PIPE MATERIAL</b>									

ALIGNMENT LEGEND	
PIPELINE MILEPOST	
PROPOSED NEXUS PIPELINE	
INTERCONNECTING PIPELINE TO TGP	
CONSTRUCTION LIMIT	
STUDY CORRIDOR	
STAGING AREA	
WAREYARD	
PERMANENT ROW	
ADDITIONAL TEMPORARY WORKSPACE	
METERING & REGULATION STATION (M&R) SITE	
COMPRESSOR STATION SITE	
FACILITIES TEMPORARY WORKSPACE	
FACILITIES PERMANENT WORKSPACE	
DELINEATED WETLAND BOUNDARY	
DELINEATED WATERBODY BANK	
DELINEATED WATERBODY CENTERLINE	
APPROXIMATE WETLAND BOUNDARY	
APPROXIMATE WATERBODY BANK	
APPROXIMATE WATERBODY CENTERLINE	
PERMANENT ACCESS ROAD	
TEMPORARY ACCESS ROAD	
PROPERTY LINE	
CONTOUR	
MUNICIPALITY LINE	
FENCE	
FOREIGN PIPELINE	
POWERLINE	
WATER PIPELINE	
RAILROAD TRACK	
TELEPHONE LINE	
TEE TAP	
BLOW OFF VALVE	
TOWER	
HORIZONTAL DIRECTIONAL DRILL ENTRY/EXIT	
TANK	
WELL:	GAS WATER OIL UNKNOWN
DATE OF AERIAL PHOTOGRAPHY: MAY 2015	

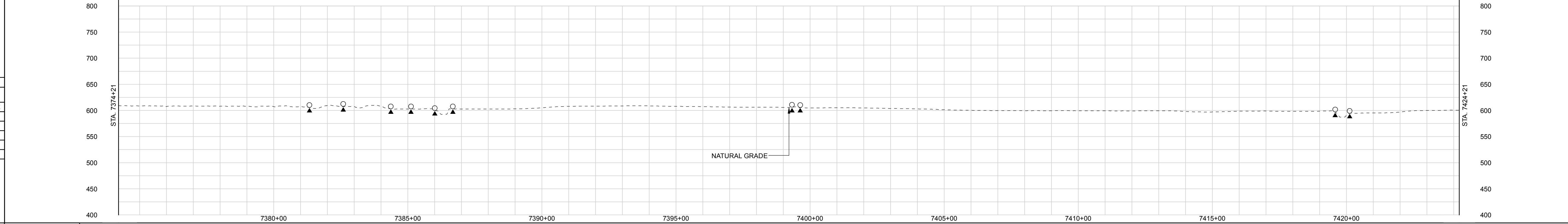


<b>ENVIRONMENTAL DATA</b>	STA. 7380+97 WETLAND D14-8-89 ENTER STA. 7383+08 WETLAND D14-8-89 EXIT STA. 7384+01 WETLAND D14-8-89 ENTER STA. 7385+72 WETLAND D14-8-89 EXIT STA. 7388+13 STREAM PACCOON CREEK D14-8-S1 STA. 7388+54 STREAM PACCOON CREEK D14-8-S1 EXIT STA. 7419+59 STREAM SOUTH CREEK E14-103-S1 STA. 7420+21 STREAM SOUTH CREEK E14-103-S1 EXIT
---------------------------	--

**E & S TYPICALS**

E&S TYPICALS WILL BE USED AS A PLAN AND WILL HAVE FURTHER INPUT FROM ENVIRONMENTAL INSPECTOR.

<b>PROFILE</b>	THE LOCATION OF TRENCH PLUGS AND SLOPE BREAKERS ARE INTENDED TO BE USED AS A GUIDELINE ONLY. EXACT LOCATION TO BE DETERMINED IN THE FIELD. SLOPE BREAKERS TRENCH PLUG		
PERMANENT SLOPE BREAKER & TRENCH PLUG SPACING			
%SLOPE	SLOPE BREAKER SPACING (FT)	%SLOPE	TRENCH PLUG SPACING (FT)
5-15%	300 FT	< 5%	NO STRUCTURE
15-30%	200 FT	5-15%	300 FT
> 30%	100 FT	15-30%	200 FT
		> 30%	100 FT
IN AG FIELDS AND RESIDENTIAL AREAS WHERE SLOPE BREAKERS ARE NOT TYPICALLY REQUIRED, INSTALL PERMANENT TRENCH PLUGS AT THE SAME SPACING AS IF PERMANENT SLOPE BREAKERS WERE REQUIRED. (FERC PLAN)			



<b>LAND USE CLASSIFICATION</b>	<b>SOILS</b>
AG AGRICULTURAL OL OPEN LAND IC INDUSTRIAL/COMMERCIAL FW FOREST/WOODLAND R RESIDENTIAL OW OPEN WATER	LAND USE % SLOPE AG FW OW FW OW FW OW FW < 5% 5-15% < 5% 5-15% < 5% 15-30% 5-15% < 5%

<b>GENERAL NOTES:</b> 1.) ALL STATIONING IS IN U.S. FEET. 2.) CONTOUR LINES AND ELEVATIONS ARE IN U.S. FEET.	<b>ENGINEERING APPROVALS</b> DRAWN BY: _____ NAME: _____		BID SIGNATURE _____ DATE _____		CONSTRUCTION SIGNATURE _____ DATE _____		<b>CLYD - WATE NEXUS PROJECT</b> PROPOSED 36" LINE NO. 01 ALIGNMENT SHEET LOC. SANDUSKY COUNTY, OHIO YEAR: 2017 W.B.S. Scale 1" = 200'	
	<b>ISSUED FOR FERC FILING (11/2015)</b> ISSUED FOR FERC FILING (11/2015)	<b>YEAR: 2017</b>		<b>Scale 1" = 200'</b>		<b>CLYD-A-1155</b>		

DWG. NO.	DESCRIPTION	REV	DSN	CK	ITEM	DESCRIPTION	QTY

<b>RIGHT-OF-WAY</b>	OH-SA-050.0000 257 FT. 15.6 RODS	OH-SA-051.0000-RD 56 FT. 3.4 RODS	OH-SA-052.0000 471 FT. 28.5 RODS	OH-SA-053.0000-RD 64 FT. 3.9 RODS	OH-SA-054.0000 2676 FT. 162.2 RODS	OH-SA-055.0000-RD 25 FT. 1.5 RODS	OH-SA-056.0000 1451 FT. 87.9 RODS	7474+21
---------------------	--	---	--	---	--	---	---	---------

**SURVEY DATA**

SURVEY COMPANY:  
FIELD BOOK:  
PAGES:

STA. 7426+61 TOP BANK  
STA. 7426+67 POWERLINE  
STA. 7426+75 CLEARANCE 20 FT.  
STA. 7426+84 ROAD EDGE  
STA. 7426+98 PAVED. CR 232  
STA. 7427+11 ROAD EDGE  
STA. 7427+12 TOP BANK  
STA. 7427+24 POWERLINE  
STA. 7427+35 TOE BANK  
STA. 7427+38 TOE BANK  
STA. 7430+79 PL-21E3X1T  
STA. 7431+69 TOP BANK  
STA. 7432+11 DITCH DEPTH 0  
STA. 7432+27 TOP BANK  
STA. 7432+28 ROAD EDGE  
STA. 7432+38 PAVED. CR 241  
STA. 7432+47 ROAD EDGE  
STA. 7432+49 TOP BANK  
STA. 7432+49 TOP BANK  
STA. 7432+67 TOP BANK  
STA. 7432+67 TOP BANK  
STA. 7432+68 GAS PL.  
STA. 7432+68 GAS PL.  
STA. 7432+68 GAS PL.  
STA. 7453+29 TOP BANK  
STA. 7453+76 TOP BANK  
STA. 7459+46  
STA. 7459+46 TOE BANK  
STA. 7459+51 TOP BANK  
STA. 7459+52 ROAD EDGE  
STA. 7459+58 PAVED. CR 228  
STA. 7459+66 ROAD EDGE  
STA. 7459+67 TOP BANK  
STA. 7459+74 TOE BANK

**CLASS LOCATION** Class 1

**PIPE MATERIAL**

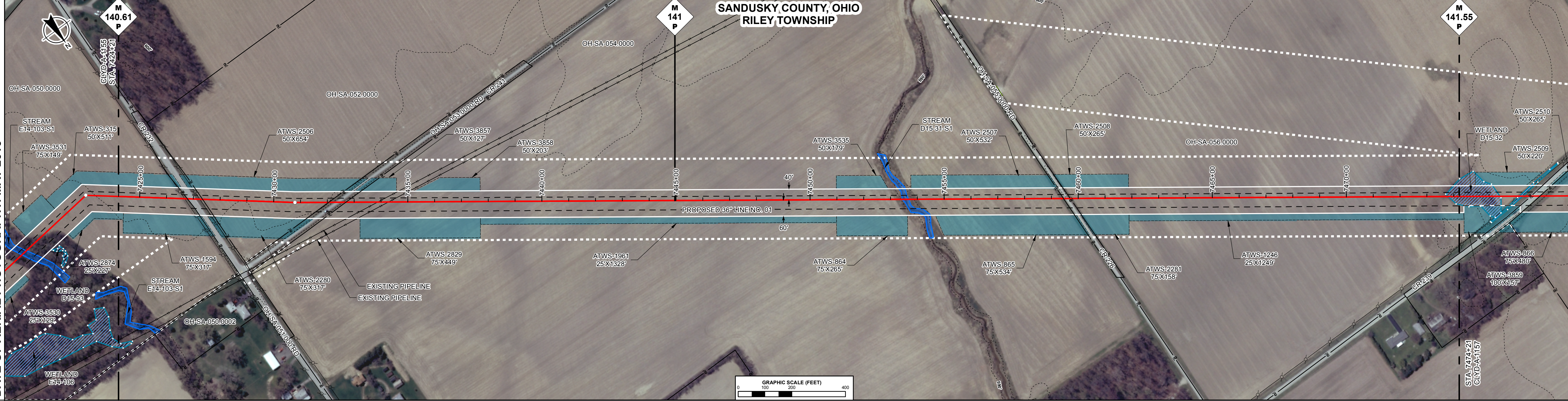
**ALIGNMENT LEGEND**

PIPELINE MILEPOST  
PROPOSED NEXUS PIPELINE  
INTERCONNECTING PIPELINE TO TGP  
CONSTRUCTION LIMIT  
STUDY CORRIDOR  
STAGING AREA  
WAREYARD  
PERMANENT ROW  
ADDITIONAL TEMPORARY WORKSPACE  
METERING & REGULATION STATION (M&R) SITE  
COMPRESSOR STATION SITE  
FACILITIES TEMPORARY WORKSPACE  
FACILITIES PERMANENT WORKSPACE  
DELINEATED WETLAND BOUNDARY  
DELINEATED WATERBODY BANK  
DELINEATED WATERBODY CENTERLINE  
APPROXIMATE WETLAND BOUNDARY  
APPROXIMATE WATERBODY BANK  
APPROXIMATE WATERBODY CENTERLINE  
PERMANENT ACCESS ROAD  
TEMPORARY ACCESS ROAD

PROPERTY LINE  
CONTOUR  
MUNICIPALITY LINE  
FENCE  
FOREIGN PIPELINE  
POWERLINE  
WATER PIPELINE  
RAILROAD TRACK  
TELEPHONE LINE  
TEE TAP  
BLOW OFF VALVE  
TOWER  
HORIZONTAL DIRECTIONAL DRILL ENTRY/EXIT  
TANK  
WELL: GAS WATER OIL UNKNOWN

UTILITY LINES  
MAINLINE VALVE (MLV)  
MICROWAVE TOWER

DATE OF AERIAL PHOTOGRAPHY: MAY 2015



**ENVIRONMENTAL DATA**

STA. 7453+51 STREAM TRIBUTARY TO SOUTH CREEK D15-31-S1 ENTER  
STA. 7454+47 STREAM TRIBUTARY TO SOUTH CREEK D15-31-S1 EXIT  
STA. 7473+71 WETLAND D15-32 ENTER

**E & S TYPICALS**

E&S TYPICALS WILL BE USED AS A PLAN AND WILL HAVE FURTHER INPUT FROM ENVIRONMENTAL INSPECTOR.

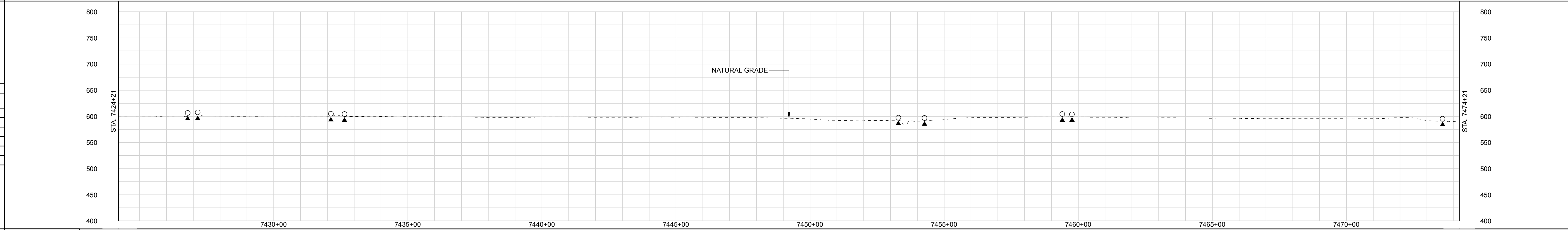
**PROFILE**

THE LOCATION OF TRENCH PLUGS AND SLOPE BREAKERS ARE INTENDED TO BE USED AS A GUIDELINE ONLY. EXACT LOCATION TO BE DETERMINED IN THE FIELD.

SLOPE BREAKERS  
TRENCH PLUG

PERMANENT SLOPE BREAKER & TRENCH PLUG SPACING			
%SLOPE	SLOPE BREAKER SPACING (FT)	%SLOPE	TRENCH PLUG SPACING (FT)
5-15%	300 FT	< 5%	NO STRUCTURE
15-30%	200 FT	5-15%	300 FT
> 30%	100 FT	15-30%	200 FT
		> 30%	100 FT

IN AG FIELDS AND RESIDENTIAL AREAS WHERE SLOPE BREAKERS ARE NOT TYPICALLY REQUIRED, INSTALL PERMANENT TRENCH PLUGS AT THE SAME SPACING AS IF PERMANENT SLOPE BREAKERS WERE REQUIRED. (FERC PLAN)



**LAND USE CLASSIFICATION**

AG AGRICULTURAL	OL OPEN LAND	IC INDUSTRIAL/COMMERCIAL
FW FOREST/WOODLAND	R RESIDENTIAL	OW OPEN WATER

**SOILS**

AG	IC	AG	IC	AG	IC	AG	IC	AG
----	----	----	----	----	----	----	----	----

**% SLOPE**

< 5%	5-15%	< 5%
------	-------	------

**GENERAL NOTES:**

- ALL STATIONING IS IN U.S. FEET.
- CONTOUR LINES AND ELEVATIONS ARE IN U.S. FEET.

**ENGINEERING APPROVALS**

DRAWN BY:	BID		CONSTRUCTION	
	NAME	SIGNATURE	DATE	SIGNATURE

**CLYD - WATE NEXUS PROJECT PROPOSED 36" LINE NO. 01 ALIGNMENT SHEET**

**LOC. SANDUSKY COUNTY, OHIO**

YEAR: 2017    W.B.S.    Scale 1" = 200'

**CLYD-A-1156**

**NEXUS GAS TRANSMISSION**

DWG. NO.	DESCRIPTION	REV	DSN	CK	DESCRIPTION	ITEM	DESCRIPTION	QTY
0A					ISSUED FOR FERC FILING (11/2015)			
0					ISSUED FOR FERC FILING (11/2015)			
	REFERENCE DRAWINGS				REVISIONS		MATERIALS	

<b>RIGHT-OF-WAY</b> TRACT NUMBERS	OH-SA-056.0000 266 FT. 16.2 RODS	OH-SA-058.0000-RD 33 FT. 2.0 RODS	OH-SA-059.0000 1403 FT. 85.0 RODS	OH-SA-060.0000-RD 29 FT. 1.8 RODS	OH-SA-061.0000 1773 FT. 107.5 RODS	OH-SA-062.0000 1332 FT. 80.7 RODS	OH-SA-063.0000 162 FT. 9.8 RODS
<b>SURVEY DATA</b> SURVEY COMPANY: FIELD BOOK: PAGES:	STA. 7476+38 TOP BANK STA. 7476+40 CENTERLINE STA. 7476+42 POWERLINE CLEARANCE 21 FT. STA. 7476+48 ROAD EDGE STA. 7477+00 PAVED, CR 239 CENTERLINE, EDGE STA. 7477+40 TOP BANK STA. 7477+42 DITCH, DEPTH 0 FT. CENTERLINE STA. 7477+50 TOP BANK  STA. 7480+99 TOP BANK STA. 7481+01 POWERLINE CLEARANCE 22 FT. STA. 7481+06 DITCH, DEPTH 0 STA. 7481+17 TOP BANK STA. 7481+18 ROAD EDGE CENTERLINE, CR 222 CENTERLINE, CR 222 STA. 7481+31 ROAD EDGE STA. 7481+32 TOP BANK STA. 7481+34 CENTERLINE, DEPTH 0 FT. CENTERLINE STA. 7481+43 TOP BANK  STA. 7480+97 TOP BANK STA. 7481+71 TOP BANK  STA. 7509+27  STA. 7522+59 STA. 7524+21						
<b>CLASS LOCATION</b>	Class 1						
<b>PIPE MATERIAL</b>							

**ALIGNMENT LEGEND**

PIPELINE MILEPOST

PROPOSED NEXUS PIPELINE

INTERCONNECTING PIPELINE TO TGP

CONSTRUCTION LIMIT

STUDY CORRIDOR

STAGING AREA

WAREYARD

PERMANENT ROW

ADDITIONAL TEMPORARY WORKSPACE

METERING & REGULATION STATION (M&R) SITE

COMPRESSOR STATION SITE

FACILITIES TEMPORARY WORKSPACE

FACILITIES PERMANENT WORKSPACE

DELINEATED WETLAND BOUNDARY

DELINEATED WATERBODY BANK

DELINEATED WATERBODY CENTERLINE

APPROXIMATE WETLAND BOUNDARY

APPROXIMATE WATERBODY BANK

APPROXIMATE WATERBODY CENTERLINE

PERMANENT ACCESS ROAD

TEMPORARY ACCESS ROAD

PROPERTY LINE

CONTOUR

MUNICIPALITY LINE

FENCE

FOREIGN PIPELINE

POWERLINE

WATER PIPELINE

RAILROAD TRACK

TELEPHONE LINE

TEE TAP

BLOW OFF VALVE

TOWER

HORIZONTAL DIRECTIONAL DRILL ENTRY/EXIT

TANK

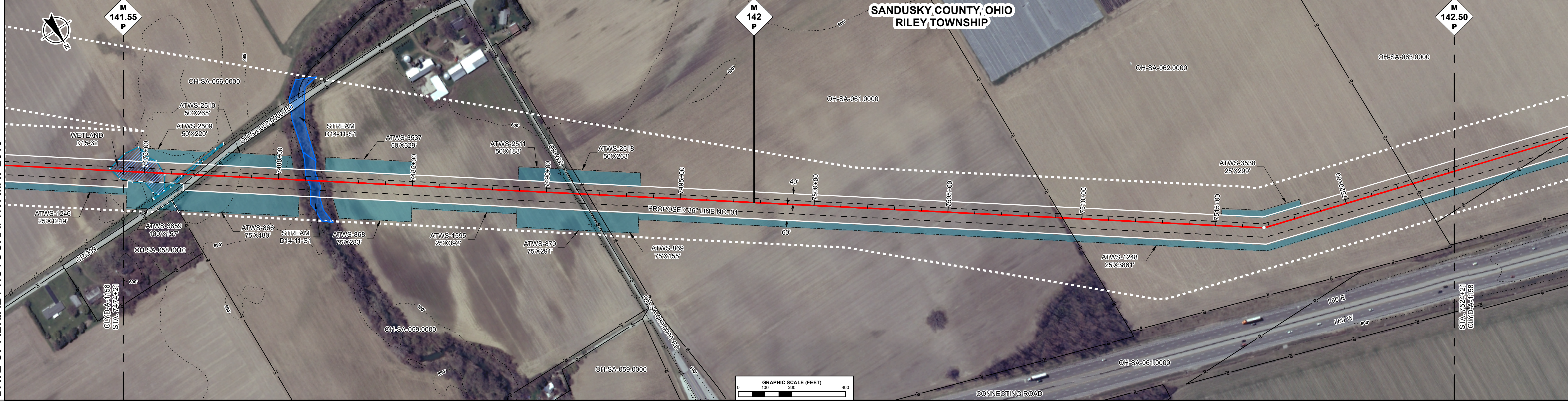
WELL: GAS WATER OIL UNKNOWN

UTILITY LINES

MAINLINE VALVE (MLV)

MICROWAVE TOWER

DATE OF AERIAL PHOTOGRAPHY: MAY 2015



**ENVIRONMENTAL DATA**

STA. 7477+01 WETLAND D15-32 EXIT

STA. 7480+88 STREAM GREEN CREEK D14-11-S1 ENTER

STA. 7481+58 STREAM GREEN CREEK D14-11-S1 EXIT

**E & S TYPICALS**

E&S TYPICALS WILL BE USED AS A PLAN AND WILL HAVE FURTHER INPUT FROM ENVIRONMENTAL INSPECTOR.

**PROFILE**

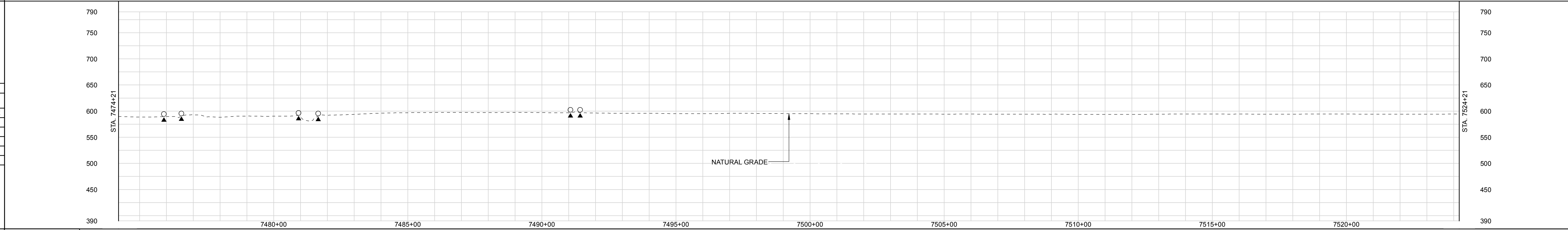
THE LOCATION OF TRENCH PLUGS AND SLOPE BREAKERS ARE INTENDED TO BE USED AS A GUIDELINE ONLY. EXACT LOCATION TO BE DETERMINED IN THE FIELD.

SLOPE BREAKERS

TRENCH PLUG

PERMANENT SLOPE BREAKER & TRENCH PLUG SPACING			
%SLOPE	SLOPE BREAKER SPACING (FT)	%SLOPE	TRENCH PLUG SPACING (FT)
5-15%	300 FT	< 5%	NO STRUCTURE
15-30%	200 FT	5-15%	300 FT
> 30%	100 FT	15-30%	200 FT
		> 30%	100 FT

IN AG FIELDS AND RESIDENTIAL AREAS WHERE SLOPE BREAKERS ARE NOT TYPICALLY REQUIRED, INSTALL PERMANENT TRENCH PLUGS AT THE SAME SPACING AS IF PERMANENT SLOPE BREAKERS WERE REQUIRED. (FERC PLAN)



**LAND USE CLASSIFICATION**

AG AGRICULTURAL	OL OPEN LAND	IC INDUSTRIAL/COMMERCIAL
FW FOREST/WOODLAND	R RESIDENTIAL	OW OPEN WATER

**SOILS**

LAND USE	AG	OL/IC/OL	AG	FW/OW/FW	AG	OL/IC/OL
% SLOPE	< 5%	5-15%	< 5%	5-15%	< 5%	5-15%

<b>GENERAL NOTES:</b> 1.) ALL STATIONING IS IN U.S. FEET. 2.) CONTOUR LINES AND ELEVATIONS ARE IN U.S. FEET.	DRAWN BY: NAME	BID SIGNATURE	CONSTRUCTION DATE	CONSTRUCTION SIGNATURE	CONSTRUCTION DATE
	<b>CLYD - WATE NEXUS PROJECT</b> PROPOSED 36" LINE NO. 01 ALIGNMENT SHEET		<b>LOC. SANDUSKY COUNTY, OHIO</b>		
	YEAR: 2017	W.B.S.	Scale 1" = 200'	CLYD-A-1157	REV. 0A

IG#

P:\2016\UPSTREAM\_PIPELINE\2016\GIS\TDR\0001\NEXUS PROPOSED MAINLINE PIPELINE 19 of 272.dwg - PLOT TIME: 2015-06-17 10:07:37



<b>RIGHT-OF-WAY</b> TRACT NUMBERS	7524+21	OH-SA-063.0000 445 FT. 27.0 RODS	7528+66	OH-SA-064.0000 428 FT. 25.9 RODS	7532+04	OH-SA-065.0000 183 FT. 11.1 RODS	7534+77	OH-SA-066.0000-RD 33 FT. 2.0 RODS	7535+08	OH-SA-067.0000 475 FT. 28.8 RODS	7539+83	OH-SA-068.0000 1040 FT. 63.0 RODS	7550+23	OH-SA-069.0000 1343 FT. 81.4 RODS	7563+66	OH-SA-070.0000-RD 41 FT. 2.5 RODS	7564+07	OH-SA-071.0000 405 FT. 24.5 RODS	7568+12	OH-SA-072.0000 609 FT. 36.9 RODS	7574+21
--------------------------------------	---------	--	---------	--	---------	--	---------	---	---------	--	---------	---	---------	---	---------	---	---------	--	---------	--	---------

**SURVEY DATA**  
SURVEY COMPANY:  
FIELD BOOK:  
PAGES:

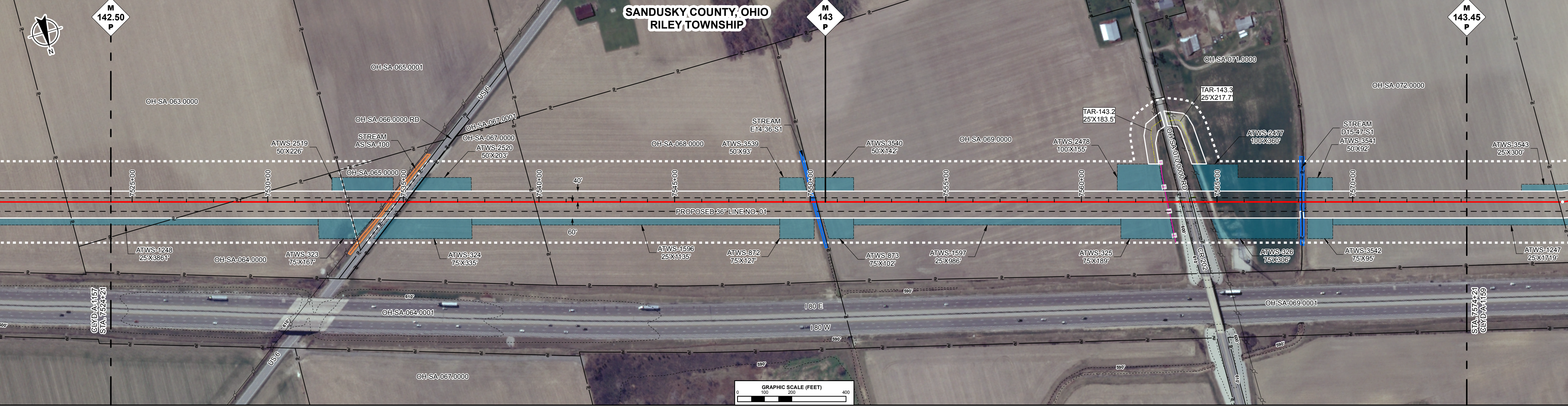
STA. 7534+37 POWERLINE, CLEARANCE 15 FT. TO BANK  
STA. 7534+48 TOE BANK  
STA. 7534+48 DITCH, DEPTH 7.41  
STA. 7534+54 CENTERLINE  
STA. 7534+64 TOP BANK  
STA. 7534+66 ROAD EDGE  
STA. 7534+66 ROAD, U.S. 6 CENTERLINE  
STA. 7534+06 ROAD EDGE  
STA. 7534+07 TOP BANK  
STA. 7534+12 DITCH, DEPTH 0 FT. CENTERLINE  
STA. 7534+19 TOE BANK  
STA. 7534+21 TOP BANK  
STA. 7549+98 TOP BANK  
STA. 7550+12 DITCH, DEPTH 0 FT. CENTERLINE  
STA. 7550+23 TOP BANK  
STA. 7563+16 ABOVEGROUND  
STA. 7563+38 TOP BANK  
STA. 7563+44 DITCH, DEPTH 0 FT. CENTERLINE  
STA. 7563+70 TOP BANK  
STA. 7563+71 FENCE  
STA. 7563+76 ROAD, U.S. 202 CENTERLINE  
STA. 7563+97 ROAD EDGE  
STA. 7564+00 TOP BANK  
STA. 7564+30 DITCH, DEPTH 0 FT. CENTERLINE  
STA. 7564+48 POWERLINE, CLEARANCE 15 FT.  
STA. 7568+08 TOP BANK  
STA. 7568+11 TOE BANK  
STA. 7568+24 FENCE

**CLASS LOCATION**  
Class 1

**PIPE MATERIAL**

**ALIGNMENT LEGEND**  
DATE OF AERIAL PHOTOGRAPHY, MAY 2015

PIPELINE MILEPOST	
PROPOSED NEXUS PIPELINE	
INTERCONNECTING PIPELINE TO TGP	
CONSTRUCTION LIMIT	
STUDY CORRIDOR	
STAGING AREA	
WAREYARD	
PERMANENT ROW	
ADDITIONAL TEMPORARY WORKSPACE	
METERING & REGULATION STATION (M&R) SITE	
COMPRESSOR STATION SITE	
FACILITIES TEMPORARY WORKSPACE	
FACILITIES PERMANENT WORKSPACE	
DELINEATED WETLAND BOUNDARY	
DELINEATED WATERBODY BANK	
DELINEATED WATERBODY CENTERLINE	
APPROXIMATE WETLAND BOUNDARY	
APPROXIMATE WATERBODY BANK	
APPROXIMATE WATERBODY CENTERLINE	
PERMANENT ACCESS ROAD	
TEMPORARY ACCESS ROAD	
PROPERTY LINE	
CONTOUR	
MUNICIPALITY LINE	
FENCE	
FOREIGN PIPELINE	
POWERLINE	
WATER PIPELINE	
RAILROAD TRACK	
TELEPHONE LINE	
TEE TAP	
BLOW OFF VALVE	
TOWER	
HORIZONTAL DIRECTIONAL DRILL ENTRY/EXIT	
TANK	
WELL	
UTILITY LINES	
MAINLINE VALVE (MLV)	
MICROWAVE TOWER	
FIRE HYDRANT	
UNKNOWN	



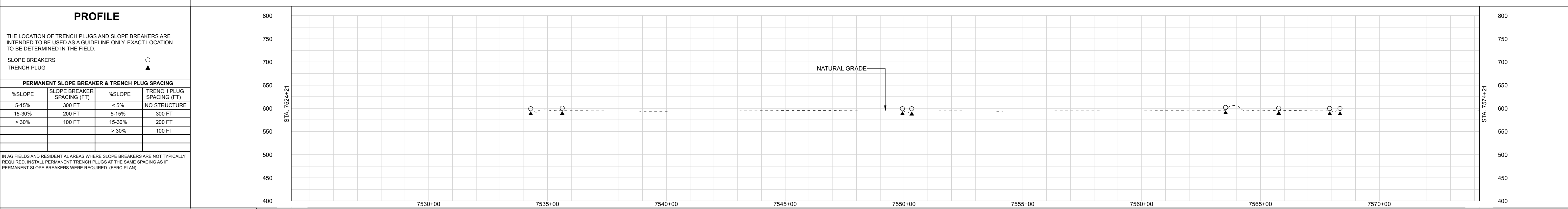
**ENVIRONMENTAL DATA**

STA. 7534+00 STREAM TRIBUTARY TO BUEHLER DITCH AS-SA-100 ENTER  
STA. 7534+91 STREAM TRIBUTARY TO BUEHLER DITCH AS-SA-100 EXIT

STA. 7549+98 STREAM TRIBUTARY TO BUEHLER DITCH E14-36-S1 ENTER  
STA. 7550+24 STREAM TRIBUTARY TO BUEHLER DITCH E14-36-S1 EXIT

STA. 7568+08 STREAM TRIBUTARY TO BUEHLER DITCH D15-47-S1 ENTER  
STA. 7568+20 STREAM TRIBUTARY TO BUEHLER DITCH D15-47-S1 EXIT

**E & S TYPICALS**  
E&S TYPICALS WILL BE USED AS A PLAN AND WILL HAVE FURTHER INPUT FROM ENVIRONMENTAL INSPECTOR.



LAND USE CLASSIFICATION			SOILS		
AG AGRICULTURAL	OL OPEN LAND	IC INDUSTRIAL/COMMERCIAL	AG	OW	IC
FW FOREST/WOODLAND	R RESIDENTIAL	OW OPEN WATER			
LAND USE			% SLOPE		
			< 5%	5-15%	< 5%
					15-30%
					< 5%

<b>GENERAL NOTES:</b> 1.) ALL STATIONING IS IN U.S. FEET. 2.) CONTOUR LINES AND ELEVATIONS ARE IN U.S. FEET.	<b>ENGINEERING APPROVALS</b> <table border="1"> <tr> <th>DRAWN BY:</th> <th>BID</th> <th colspan="2">CONSTRUCTION</th> </tr> <tr> <td>NAME</td> <td>SIGNATURE</td> <td>DATE</td> <td>SIGNATURE</td> </tr> </table>	DRAWN BY:	BID	CONSTRUCTION		NAME	SIGNATURE	DATE	SIGNATURE	<b>CLYD - WATE NEXUS PROJECT</b> <b>PROPOSED 36" LINE NO. 01 ALIGNMENT SHEET</b> <b>LOC. SANDUSKY COUNTY, OHIO</b> YEAR: 2017    W.B.S.    Scale 1" = 200' <b>CLYD-A-1158</b> REV. 0B										
	DRAWN BY:	BID	CONSTRUCTION																	
NAME	SIGNATURE	DATE	SIGNATURE																	
<table border="1"> <tr> <th>DWG. NO.</th> <th>DESCRIPTION</th> <th>REV</th> <th>DSN</th> <th>CK</th> <th>DESCRIPTION</th> <th>ITEM</th> <th>DESCRIPTION</th> <th>QTY</th> </tr> <tr> <td></td> <td>REFERENCE DRAWINGS</td> <td></td> <td></td> <td></td> <td>REVISIONS</td> <td></td> <td>MATERIALS</td> <td></td> </tr> </table>	DWG. NO.	DESCRIPTION	REV	DSN	CK	DESCRIPTION	ITEM	DESCRIPTION	QTY		REFERENCE DRAWINGS				REVISIONS		MATERIALS			
DWG. NO.	DESCRIPTION	REV	DSN	CK	DESCRIPTION	ITEM	DESCRIPTION	QTY												
	REFERENCE DRAWINGS				REVISIONS		MATERIALS													

<b>RIGHT-OF-WAY</b> TRACT NUMBERS	7574+21	OH-SA-072.0000 339 FT. 20.5 RODS	7577+60	OH-SA-073.0000 1127 FT. 68.3 RODS	7588+87	OH-SA-074.0000 1126 FT. 68.2 RODS	7600+14	OH-SA-075.0000-RD 23 FT. 1.4 RODS	7600+36	OH-SA-076.0000 1280 FT. 77.6 RODS	7613+16	OH-SA-077.0000 696 FT. 42.2 RODS	7620+12	OH-SA-078.0000 409 FT. 24.8 RODS	7624+21
<b>SURVEY DATA</b> SURVEY COMPANY: FIELD BOOK: PAGES:	STA. 7574+21 PL-7599-LI STA. 7577+60 PL-7599-LI STA. 7588+87 PL-418K37-RT STA. 7598+87 ROAD EDGE STA. 7598+87 TOP BANK STA. 7598+87 DITCH, DEPTH 0 STA. 7598+87 CENTERLINE STA. 7600+14 TOP BANK STA. 7600+14 ROAD EDGE STA. 7600+14 MUNICIPALITY LINE STA. 7600+22 PAVED, CR 188 STA. 7600+22 CENTERLINE STA. 7600+36 TOP BANK STA. 7600+36 DITCH, DEPTH 0 STA. 7600+36 CENTERLINE STA. 7600+36 POWERLINE STA. 7600+36 CLEARANCE 25 FT. STA. 7600+81 TOP BANK STA. 7600+81 ROAD EDGE STA. 7601+74 ROAD EDGE														
<b>CLASS LOCATION</b>	Class 1														
<b>PIPE MATERIAL</b>															

**ALIGNMENT LEGEND**

PIPELINE MILEPOST

PROPOSED NEXUS PIPELINE

INTERCONNECTING PIPELINE TO TGP

CONSTRUCTION LIMIT

STUDY CORRIDOR

STAGING AREA

WAREYARD

PERMANENT ROW

ADDITIONAL TEMPORARY WORKSPACE

METERING & REGULATION STATION (M&R) SITE

COMPRESSOR STATION SITE

FACILITIES TEMPORARY WORKSPACE

FACILITIES PERMANENT WORKSPACE

DELINEATED WETLAND BOUNDARY

DELINEATED WATERBODY BANK

DELINEATED WATERBODY CENTERLINE

APPROXIMATE WETLAND BOUNDARY

APPROXIMATE WATERBODY BANK

APPROXIMATE WATERBODY CENTERLINE

PERMANENT ACCESS ROAD

TEMPORARY ACCESS ROAD

PROPERTY LINE

CONTOUR

MUNICIPALITY LINE

FENCE

FOREIGN PIPELINE

POWERLINE

WATER PIPELINE

RAILROAD TRACK

TELEPHONE LINE

TEE TAP

BLOW OFF VALVE

TOWER

HORIZONTAL DIRECTIONAL DRILL ENTRY/EXIT

TANK

WELL: GAS WATER OIL UNKNOWN

UTILITY LINES

MAINLINE VALVE (MLV)

MICROWAVE TOWER

DATE OF AERIAL PHOTOGRAPHY: MAY 2015



**ENVIRONMENTAL DATA**

STA. 7588+37 STREAM BANK  
CREEK D14-40-S1 ENTER

STA. 7588+86 STREAM BANK  
CREEK D14-40-S1 EXIT

**E & S TYPICALS**

E&S TYPICALS WILL BE USED AS A PLAN AND WILL HAVE FURTHER INPUT FROM ENVIRONMENTAL INSPECTOR.

**PROFILE**

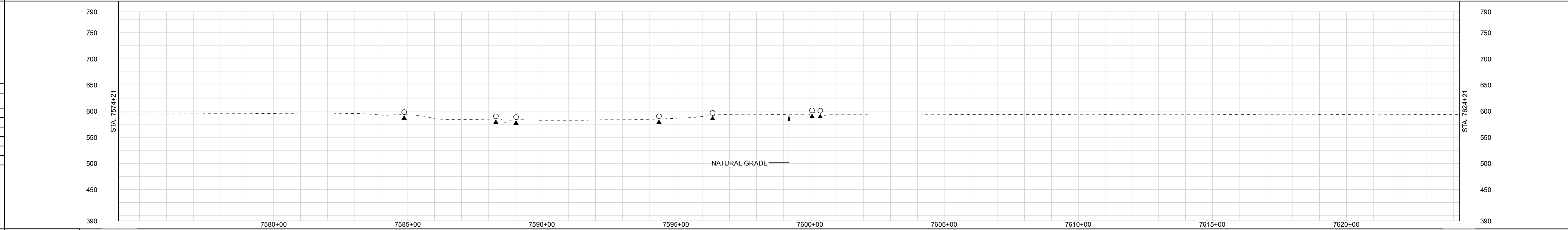
THE LOCATION OF TRENCH PLUGS AND SLOPE BREAKERS ARE INTENDED TO BE USED AS A GUIDELINE ONLY. EXACT LOCATION TO BE DETERMINED IN THE FIELD.

SLOPE BREAKERS

TRENCH PLUG

PERMANENT SLOPE BREAKER & TRENCH PLUG SPACING			
%SLOPE	SLOPE BREAKER SPACING (FT)	%SLOPE	TRENCH PLUG SPACING (FT)
5-15%	300 FT	< 5%	NO STRUCTURE
15-30%	200 FT	5-15%	300 FT
> 30%	100 FT	15-30%	200 FT
		> 30%	100 FT

IN AG FIELDS AND RESIDENTIAL AREAS WHERE SLOPE BREAKERS ARE NOT TYPICALLY REQUIRED, INSTALL PERMANENT TRENCH PLUGS AT THE SAME SPACING AS IF PERMANENT SLOPE BREAKERS WERE REQUIRED. (FERC PLAN)



**LAND USE CLASSIFICATION**

AG AGRICULTURAL	OL OPEN LAND	IC INDUSTRIAL/COMMERCIAL
FW FOREST/WOODLAND	R RESIDENTIAL	OW OPEN WATER

**SOILS**

AG	DL/DW	AG	IC	AG
<b>LAND USE</b>				
% SLOPE				
< 5%	5-15%	< 5%	5-15%	< 5%

**GENERAL NOTES:**

- ALL STATIONING IS IN U.S. FEET.
- CONTOUR LINES AND ELEVATIONS ARE IN U.S. FEET.

**ENGINEERING APPROVALS**

DRAWN BY:	BID		CONSTRUCTION		
	NAME	SIGNATURE	DATE	SIGNATURE	DATE

**CLYD - WATE NEXUS PROJECT**  
PROPOSED 36" LINE NO. 01  
ALIGNMENT SHEET

LOC. SANDUSKY COUNTY, OHIO

YEAR: 2017 W.B.S. Scale 1" = 200'

**NEXUS**  
GAS TRANSMISSION

CLYD-A-1159

REV. 0A

**REVISIONS**

REV	DSN	CK	DESCRIPTION	ITEM	DESCRIPTION	QTY
0A			ISSUED FOR FERC FILING (11/2015)			
0			ISSUED FOR FERC FILING (11/2015)			

<b>RIGHT-OF-WAY</b> TRACT NUMBERS	OH-SA-078.0000 188 FT. 11.4 RODS	OH-SA-079.0000-RD 24 FT. 1.5 RODS	OH-SA-080.0000 1251 FT. 75.8 RODS	OH-SA-081.0000 417 FT. 25.3 RODS	OH-SA-082.0000-RD 239 FT. 14.5 RODS	OH-SA-081.0000 23 FT. 1.4 RODS	OH-SA-083.0000 410 FT. 24.8 RODS	OH-SA-081.0000 1910 FT. 115.8 RODS	OH-SA-084.0000-RD 18 FT. 1.1 RODS	OH-SA-085.0000 520 FT. 31.5 RODS	
<b>SURVEY DATA</b> SURVEY COMPANY: FIELD BOOK: PAGES:	STA. 7625+25 ROAD EDGE STA. 7625+86 180' E STA. 7626+10 ROAD EDGE STA. 7626+10 PAVED, CR 188 STA. 7626+10 ROAD EDGE STA. 7626+31 TOP BANK STA. 7626+31 TOP BANK STA. 7626+50 DITCH, DEPTH STA. 7626+50 TOP BANK STA. 7627+08 ROAD EDGE STA. 7627+39 ROAD EDGE		STA. 7638+71 PL - 90'00" RT STA. 7644+98 FENCE STA. 7644+98 180' E (SCALED) STA. 7644+53 180' W CENTERLINE (SCALED)		STA. 7646+93 PL - 89'99" LT STA. 7653+31 PL - 44'99" RT		STA. 7665+90 PL - 60'00" LT STA. 7665+61 TOP BANK STA. 7665+65 DITCH, DEPTH 0 FT. CENTERLINE STA. 7665+85 PAVED, CR 234 CENTERLINE STA. 7665+94 TOP BANK STA. 7665+01 DITCH, DEPTH 0 STA. 7665+02 TOP BANK STA. 7665+05 POWERLINE, CLEARANCE 22 FT.				
<b>CLASS LOCATION</b>	Class 1										
<b>PIPE MATERIAL</b>											

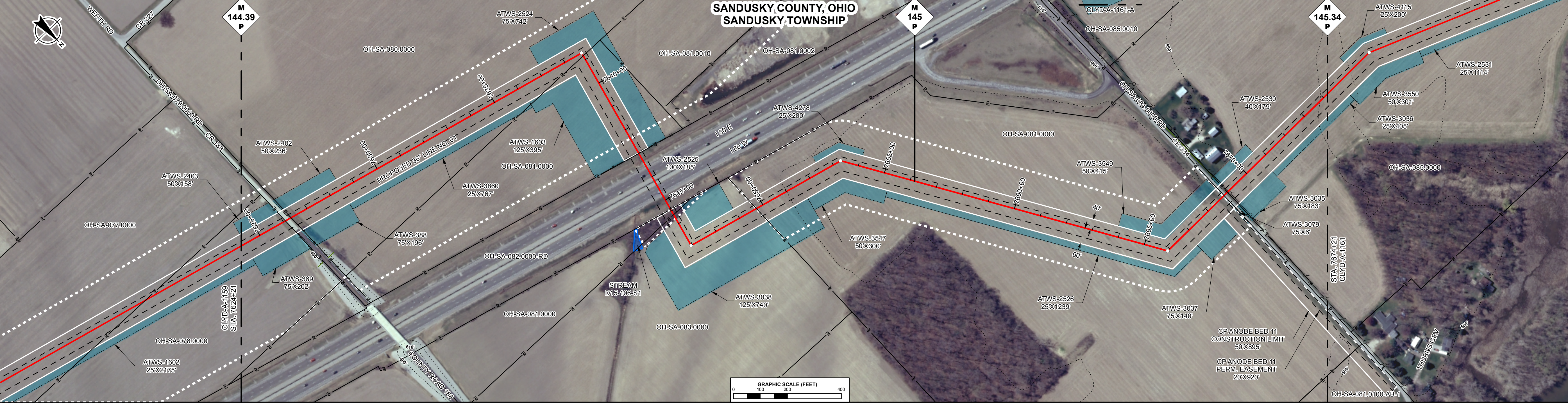
**ALIGNMENT LEGEND**

PIPELINE MILEPOST  
PROPOSED NEXUS PIPELINE  
INTERCONNECTING PIPELINE TO TGP  
CONSTRUCTION LIMIT  
STUDY CORRIDOR  
STAGING AREA  
WAREYARD  
PERMANENT ROW  
ADDITIONAL TEMPORARY WORKSPACE  
METERING & REGULATION STATION (M&R) SITE  
COMPRESSOR STATION SITE  
FACILITIES TEMPORARY WORKSPACE  
FACILITIES PERMANENT WORKSPACE  
DELINEATED WETLAND BOUNDARY  
DELINEATED WATERBODY BANK  
DELINEATED WATERBODY CENTERLINE  
APPROXIMATE WETLAND BOUNDARY  
APPROXIMATE WATERBODY BANK  
APPROXIMATE WATERBODY CENTERLINE  
PERMANENT ACCESS ROAD  
TEMPORARY ACCESS ROAD

PROPERTY LINE  
CONTOUR  
MUNICIPALITY LINE  
FENCE  
FOREIGN PIPELINE  
POWERLINE  
WATER PIPELINE  
RAILROAD TRACK  
TELEPHONE LINE  
TEE TAP  
BLOW OFF VALVE  
TOWER  
HORIZONTAL DIRECTIONAL DRILL ENTRY/EXIT  
TANK  
WELL: GAS WATER OIL UNKNOWN

UTILITY LINES  
MAINLINE VALVE (MLV)  
MICROWAVE TOWER

DATE OF AERIAL PHOTOGRAPHY: MAY 2015



**ENVIRONMENTAL DATA**

**E & S TYPICALS**

E&S TYPICALS WILL BE USED AS A PLAN AND WILL HAVE FURTHER INPUT FROM ENVIRONMENTAL INSPECTOR.

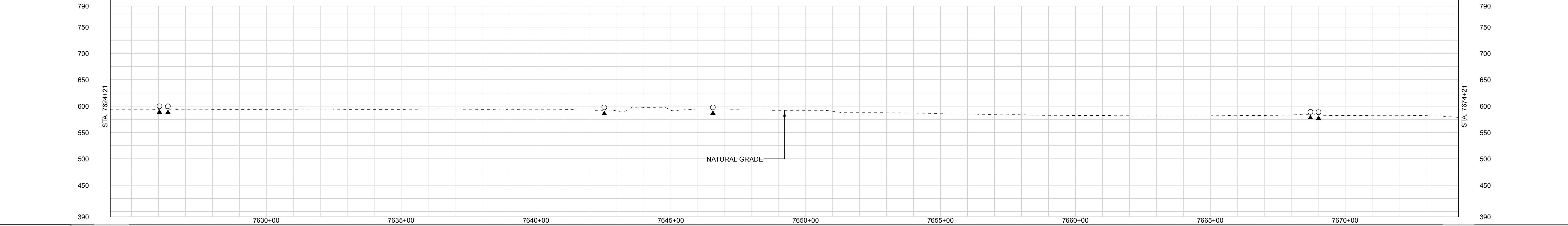
**PROFILE**

THE LOCATION OF TRENCH PLUGS AND SLOPE BREAKERS ARE INTENDED TO BE USED AS A GUIDELINE ONLY. EXACT LOCATION TO BE DETERMINED IN THE FIELD.

SLOPE BREAKERS  
TRENCH PLUG

PERMANENT SLOPE BREAKER & TRENCH PLUG SPACING			
%SLOPE	SLOPE BREAKER SPACING (FT)	%SLOPE	TRENCH PLUG SPACING (FT)
5-15%	300 FT	< 5%	NO STRUCTURE
15-30%	200 FT	5-15%	300 FT
> 30%	100 FT	15-30%	200 FT
		> 30%	100 FT

IN AG FIELDS AND RESIDENTIAL AREAS WHERE SLOPE BREAKERS ARE NOT TYPICALLY REQUIRED, INSTALL PERMANENT TRENCH PLUGS AT THE SAME SPACING AS IF PERMANENT SLOPE BREAKERS WERE REQUIRED. (FERC PLAN)



**LAND USE CLASSIFICATION**

AG AGRICULTURAL	OL OPEN LAND	IC INDUSTRIAL/COMMERCIAL
FW FOREST/WOODLAND	R RESIDENTIAL	OW OPEN WATER

**SOILS**

AG	OL	IC	OL	AG	OL	IC	OL	AG	OL	IC	OL	AG
<b>% SLOPE</b>												
< 5%												

<b>GENERAL NOTES:</b> 1.) ALL STATIONING IS IN U.S. FEET. 2.) CONTOUR LINES AND ELEVATIONS ARE IN U.S. FEET.	<b>DRAWN BY:</b>	<b>BID</b>		<b>CONSTRUCTION</b>	
	NAME	SIGNATURE	DATE	SIGNATURE	DATE
<b>ENGINEERING APPROVALS</b>					
<b>CLYD - WATE NEXUS PROJECT PROPOSED 36" LINE NO. 01 ALIGNMENT SHEET</b>					
<b>LOC. SANDUSKY COUNTY, OHIO</b>					
YEAR: 2017		W.B.S.		Scale 1" = 200'	
<b>CLYD-A-1160</b>				<b>REV. 0A</b>	
<b>APPENDIX IA-4</b>		<b>SITE SPECIFIC RESIDENTIAL CROSSING PLANS</b>		<b>REV. 0A</b>	
<b>DWG. NO.</b>		<b>DESCRIPTION</b>		<b>REV. 0</b>	
<b>REFERENCE DRAWINGS</b>		<b>DESCRIPTION</b>		<b>REV. 0</b>	
<b>REV</b>	<b>DSN</b>	<b>CK</b>	<b>DESCRIPTION</b>	<b>ITEM</b>	<b>QTY</b>
			<b>REVISIONS</b>		
			<b>DESCRIPTION</b>		
			<b>MATERIALS</b>		



RIGHT-OF-WAY TRACT NUMBERS	7674+21	OH-SA-085.0000 1112 FT. 67.3 RODS	7685+32	OH-SA-086.0000 1112 FT. 67.4 RODS	7695+44	OH-SA-087.0000-WB 499 FT. 30.2 RODS	OH-SA-090.0000 121 FT. 7.3 RODS	OH-SA-088.0000 95 FT. 5.8 RODS	OH-SA-089.0000 158 FT. 9.6 RODS	OH-SA-088.0000 12 FT. 0.7 RODS	OH-SA-090.0000 301 FT. 18.2 RODS	OH-SA-091.0000 30 FT. 1.8 RODS	OH-SA-092.0000 883 FT. 53.5 RODS	7717+45	OH-SA-093.0000-RD 43 FT. 2.6 RODS	OH-SA-094.0000 122 FT. 7.4 RODS	OH-SA-095.0000 220 FT. 13.3 RODS	OH-SA-096.0000 293 FT. 17.8 RODS	7724+21
----------------------------	---------	---	---------	---	---------	---	---------------------------------------	--------------------------------------	---------------------------------------	--------------------------------------	--	--------------------------------------	--	---------	---	---------------------------------------	--	--	---------

SURVEY DATA	SURVEY COMPANY: FIELD BOOK: PAGES:	STA. 7676+38 P.L. - 22+30.0' RT	STA. 7692+63 P.L. - 22+30.0' RT STA. 7692+04 HDD EXIT	STA. 7699+46 MUNICIPALITY LINE	STA. 7705+34 COUNTY ROAD (03 CENTERLINE (SCALED))	STA. 7713+27 P.L. - 3+18.3' RT STA. 7713+28 HDD ENTRY	STA. 7717+09 TOE BANK STA. 7717+20 ROAD EDGE STA. 7717+39 PAVED, SH 53 CENTERLINE EDGE STA. 7717+60 TOP BANK STA. 7717+72 TOE BANK STA. 7717+77 LOWERLINE, CLEARANCE 17 FT.	STA. 7720+83 TOE BANK STA. 7721+02 TOP BANK	STA. 7723+83 TOE BANK STA. 7723+98 TOE BANK STA. 7724+05 TOE BANK
-------------	--	---------------------------------	--	--------------------------------	---	--	--	--	---

CLASS LOCATION	Class 1	Class 2	Class 3
PIPE MATERIAL			

### ALIGNMENT LEGEND

PIPELINE MILEPOST

PROPOSED NEXUS PIPELINE

INTERCONNECTING PIPELINE TO TGP

CONSTRUCTION LIMIT

STUDY CORRIDOR

STAGING AREA

WAREYARD

PERMANENT ROW

ADDITIONAL TEMPORARY WORKSPACE

METERING & REGULATION STATION (M&R) SITE

COMPRESSOR STATION SITE

FACILITIES TEMPORARY WORKSPACE

FACILITIES PERMANENT WORKSPACE

DELINEATED WETLAND BOUNDARY

DELINEATED WATERBODY BANK

DELINEATED WATERBODY CENTERLINE

APPROXIMATE WETLAND BOUNDARY

APPROXIMATE WATERBODY BANK

APPROXIMATE WATERBODY CENTERLINE

PERMANENT ACCESS ROAD

TEMPORARY ACCESS ROAD

PROPERTY LINE

CONTOUR

MUNICIPALITY LINE

FENCE

FOREIGN PIPELINE

POWERLINE

WATER PIPELINE

RAILROAD TRACK

TELEPHONE LINE

TEE TAP

BLOW OFF VALVE

TOWER

HORIZONTAL DIRECTIONAL DRILL ENTRY/EXIT

TANK

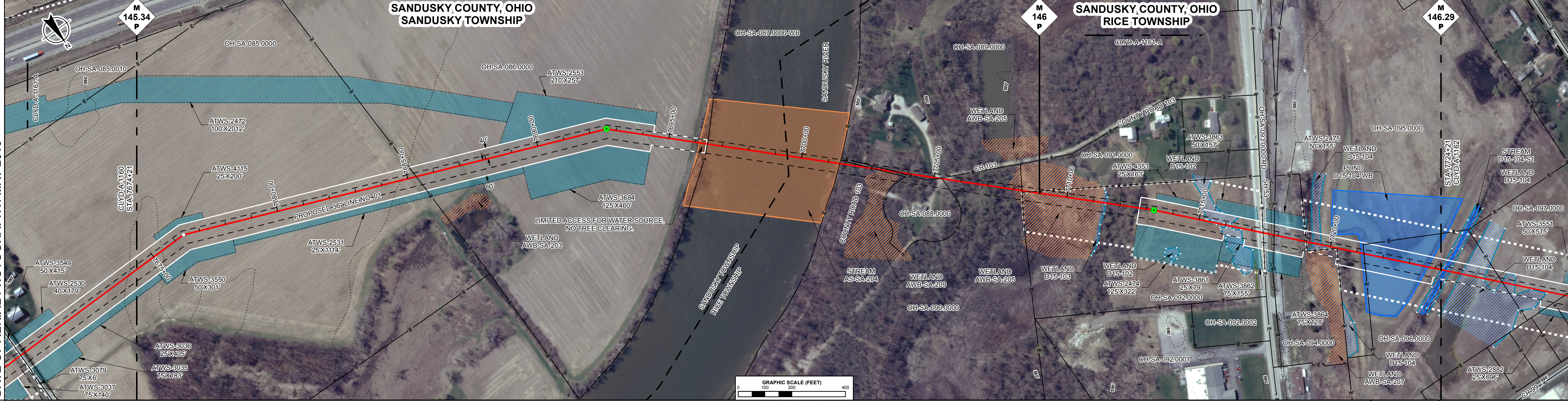
WELL: GAS WATER OIL UNKNOWN

UTILITY LINES

MAINLINE VALVE (MLV)

MICROWAVE TOWER

DATE OF AERIAL PHOTOGRAPHY: MAY 2015



### ENVIRONMENTAL DATA

STA. 7696+11 STREAM SANDUSKY RIVER AS-SA-204 ENTER	STA. 7701+44 STREAM SANDUSKY RIVER AS-SA-204 EXIT	STA. 7702+44 WETLAND AWB-SA-209 ENTER	STA. 7703+88 WETLAND AWB-SA-209 EXIT	STA. 7707+78 WETLAND AWB-SA-209 ENTER	STA. 7714+00 WETLAND D15-103 ENTER	STA. 7714+33 WETLAND AWB-SA-205 EXIT	STA. 7714+49 WETLAND D15-103 EXIT	STA. 7714+40 WETLAND D15-102 ENTER	STA. 7714+57 WETLAND D15-102 EXIT	STA. 7714+68 WETLAND D15-102 ENTER	STA. 7717+20 WETLAND D15-102 EXIT	STA. 7719+19 WETLAND D15-104 ENTER	STA. 7719+20 WETLAND AWB-SA-207 ENTER	STA. 7719+88 WETLAND AWB-SA-207 EXIT	STA. 7719+98 WETLAND SANDUSKY RIVER D15-104-WB ENTER	STA. 7723+82 POND TRIBUTARY TO D15-104-WB EXIT	STA. 7724+10 WETLAND D15-104 ENTER
--	---	---------------------------------------	--------------------------------------	---------------------------------------	------------------------------------	--------------------------------------	-----------------------------------	------------------------------------	-----------------------------------	------------------------------------	-----------------------------------	------------------------------------	---------------------------------------	--------------------------------------	--	--	------------------------------------

### E & S TYPICALS

E&S TYPICALS WILL BE USED AS A PLAN AND WILL HAVE FURTHER INPUT FROM ENVIRONMENTAL INSPECTOR.

### PROFILE

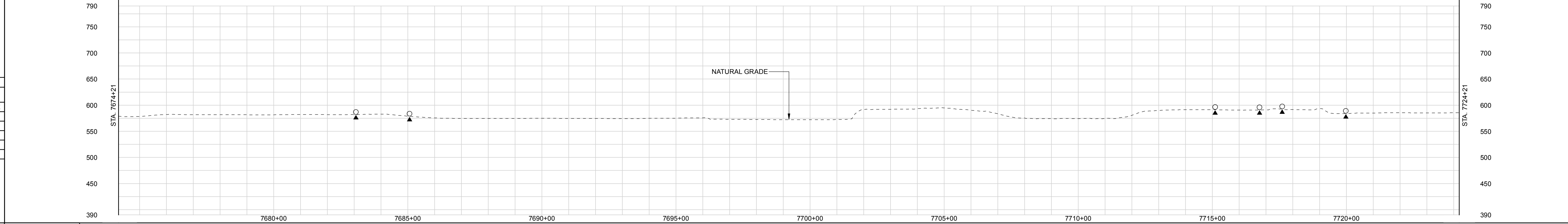
THE LOCATION OF TRENCH PLUGS AND SLOPE BREAKERS ARE INTENDED TO BE USED AS A GUIDELINE ONLY. EXACT LOCATION TO BE DETERMINED IN THE FIELD.

SLOPE BREAKERS

TRENCH PLUG

PERMANENT SLOPE BREAKER & TRENCH PLUG SPACING			
%SLOPE	SLOPE BREAKER SPACING (FT)	%SLOPE	TRENCH PLUG SPACING (FT)
5-15%	300 FT	< 5%	NO STRUCTURE
15-30%	200 FT	5-15%	300 FT
> 30%	100 FT	15-30%	200 FT
		> 30%	100 FT

IN AG FIELDS AND RESIDENTIAL AREAS WHERE SLOPE BREAKERS ARE NOT TYPICALLY REQUIRED, INSTALL PERMANENT TRENCH PLUGS AT THE SAME SPACING AS IF PERMANENT SLOPE BREAKERS WERE REQUIRED. (FERC PLAN)



### LAND USE CLASSIFICATION

AG AGRICULTURAL	OL OPEN LAND	IC INDUSTRIAL/COMMERCIAL
FW FOREST/WOODLAND	R RESIDENTIAL	OW OPEN WATER

### SOILS

LAND USE	AG	OL	OW	FW	R	FW	OL	FW	AG	IC	OL	OW	OL
% SLOPE	< 5%			15-30%	< 5%	5-15%	< 5%	5-15%	< 5%	5-15%	< 5%		

GENERAL NOTES:

- ALL STATIONING IS IN U.S. FEET.
- CONTOUR LINES AND ELEVATIONS ARE IN U.S. FEET.

#### ENGINEERING APPROVALS

DRAWN BY:		CONSTRUCTION	
NAME	SIGNATURE	DATE	SIGNATURE

#### CLYD - WATE NEXUS PROJECT

#### PROPOSED 36" LINE NO. 01 ALIGNMENT SHEET

LOC. SANDUSKY COUNTY, OHIO

YEAR: 2017    W.B.S.    Scale 1" = 200'

APPENDIX IA-5	HDD CROSSING PLANS	0A	ISSUED FOR FERC FILING (11/2015)	
DWG. NO.	DESCRIPTION	REV	DSN	CK
	REFERENCE DRAWINGS		DESCRIPTION	REVISIONS
		ITEM	DESCRIPTION	MATERIALS
				QTY