

Greetings Refuse/Recycling Customers,

What's in your recycling cart?

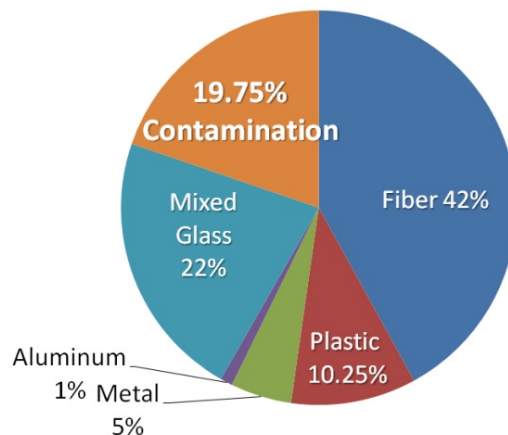
Chatting earlier this summer with Dan Schoewe, *Operations Manager* for Republic Services (*formerly BFI*), at the Recycling Center facility, I learned that trash and 'contaminants' in the recycling stream are almost 20% of the total residential mixed recycling currently coming into the center.

"More and more we see non-recyclables and trash being mixed in with recyclable items and that impacts us all."

Dan Schoewe, Operations Mgr.

Mixed, single-stream recycling increases recycling rates but can also increase contamination rates. It is important to keep trash and recyclables separate so that recyclables don't become contaminated and therefore can't be reused for making other products. Recyclables (such as paper, cardboard, glass and aluminum) are part of the global economy and are affected by the laws of supply and demand. Consistently clean and properly prepared recyclables are essential to ensure market value.

Republic Services Residential Mixed Recycling Stream



Glass bottles and jars are collected curbside but that does not include broken mirrors, windows, dishes or picture frames. These types of 'glass' are hazardous to collect and can cause injury to workers on the line. Additionally, Dan said, *"There is also a lot of wear & tear on the equipment"* and different types of glass have different melting points. Please do not throw these types of glass into your recycling cart; instead, they should be put into your trash cart.

Another item that is not recyclable through the City's curbside program is **shredded paper**. Shredded paper clogs recycling equipment and scanners for sorting. Please, drop off shredded paper in a sealed, clear plastic bag, into any of the green and yellow **Paper Retriever** bins located behind the library, at all schools, Splash Zone, Kendal and on the Oberlin College campus.

Plastic bags don't belong in your recycling cart either. **Plastic bags and product films** wrap around the gears and wheels of the machinery and can shut down operations. Daily, Dan and his crew try to be pro-active by cleaning and cutting out plastic from the machines during breaks to minimize any loss of production. Drop off your #2 & #4 plastic bags and films at Walmart or Giant Eagle for recycling.

Plastics – single use cups, berry and produce containers

and plastic blister packaging are brittle and break apart while moving through the recycling facility. The loose pieces end up mixing into glass and paper making them unsuitable for resale. These types of plastics should be put into your trash cart. **Styrofoam packaging**, cups and food containers are 90% air and break apart into tiny pieces during the sorting process. Please place into your trash cart. **"Block" Styrofoam** can be recycled but not curbside. See the other side for an upcoming, September drop-off event. **Drinking straws, plastic utensils and paper plates** should be thrown into the trash. **Bulky plastics** should be donated if clean and in good shape; otherwise, they should be placed into your trash cart.

Remember, making products from recycled materials uses, on average, 50% less energy than making them from raw materials, helping to conserve our natural resources. Placing non-recyclables into your recycling cart costs the processor and our city time and money. Our goal is to maximize diversion while minimizing contamination. Remember to **Recycle Right!**

What About Plastic?	Recycle Curbside?
Beverage bottles and jugs (water, milk, juice)	✓
Food tubs and lids (yogurt, cottage cheese)	✓
Laundry, shampoo and soap containers	✓
Produce, deli and bakery trays/clamshells	✗
Plastic bags, wraps and film	✗
Cups (Solo cups, coffee cups)	✗
Drinking straws	✗
Utensils and plates	✗
Bulky plastic (chairs, crates, buckets, toys)	✗

Other Recycling Contaminants

Propane Tanks
Flammable Liquid Containers
Lithium Batteries
Medical Needles
Scrap Steel

WHAT GOES WHERE?

Curbside Recycling

Empty and rinse containers.
Replace caps on flattened cartons and plastic bottles.
Place only these types of items loose into the cart.



Plastic Bottles
& Containers



Cartons



Cans



Glass



Cardboard & Paper

Curbside Trash

These items cannot be recycled through our curbside program and must be disposed of in your trash cart.



Tin Foil &
Aluminum Trays



Styrofoam
Containers



Paper Towels



Scrap Steel



Needles

Curbside Green Waste

Place Items on Tree Lawn

Purchase yard waste stickers at 69 S. Main and call 775-7218 to schedule a pick up. Yard waste must be placed in marked biodegradable paper or plastic yard waste bags.

Brush Collections: Spring brush – mid April to mid May.

Fall brush – mid Sept. to mid October.

Rake leaves to the curb in the fall.



- ✓ Yard Waste
- ✓ Brush
- ✓ Leaves

Drop Off Recycling

Paper Retriever Bins



Shredded Paper,
Mixed Paper & Bulk
Cardboard

City Hall (85 S. Main St.)



Light Bulbs
& CFL's

Lorain County Solid Waste District, Collection Center



Household Hazardous
Waste, E-Scrap, Lamps &
Ballast, Scrap Tires
and More



Tooth brushes, empty
toothpaste tubes & floss
containers and packaging

MYTH: A RECYCLE SYMBOL ON THE BOTTOM OF A PLASTIC CONTAINER MEANS IT'S RECYCLABLE – False. The recycling symbol represents the type of plastic not that it is recyclable. Manufacturers put the recycling arrows on packaging and materials even though they are not recyclable in all recycling programs.

MYTH: GARDEN WASTE ISN'T A RECYCLING ISSUE, IT BIODEGRADES IN THE LANDFILL – True. Garden waste breaks down in a landfill *but* in an environment where there is no air. As it breaks down methane is produced, even years after the landfill closes. We recommend residents dispose of green waste through the city's curbside yard waste, brush and leaf collection programs or home composting.

MYTH: CANS AND PLASTIC BOTTLES WITH LIQUID INSIDE THEM CAN STILL BE RECYCLED - False. The liquid will eventually spill out and can cause recycling machines to malfunction. Recycling centers will toss these items into the trash, which ends up in the landfill even with just a small amount of liquid inside. So please be sure to empty, rinse and dry out your cans and bottles before placing them into your recycling cart. It only takes a minute but makes a huge difference!
Thank you for your continued waste reduction and recycling commitment. Questions: recycling@cityofoberlin.com.

Block Styrofoam Drop-off Recycling

Sat., Sept. 23rd through
Sun., Oct. 1st, 2017

